



Altamont Sector Stormwater Management Program 2025 Annual Report

**California Department of Parks and Recreation
Diablo Range District
15751 Tesla Road
Livermore, CA 94550-9364**

Date: February 2026

Table of Contents

1	Purpose	4
1.1	Site Background	5
1.2	Regulatory Background	7
2	Description of SWMP Implementation.....	8
2.1	Education and Outreach Program	8
2.1.1	Website	9
2.1.2	Educational Brochures.....	10
2.1.3	Interpretive Panels	11
2.1.4	Special Events.....	13
2.1.5	Educational Booth and Information Station	14
2.1.6	Social Media	16
2.1.7	Junior Rangers.....	17
2.1.8	School Field Trips and PORTS.....	18
2.1.8	Volunteer Programs.....	18
2.1.9	Biannual Staff Training.....	19
2.1.10	Carnegie Advisory Team	20
2.2	Public Involvement and Participation Program	21
2.2.1	Public Involvement.....	21
2.2.2	Target Audience Awareness	21
2.2.3	Target Audience Actions.....	23
2.3	Illicit Discharge Detection and Elimination Program	23
2.3.1	IDDE Program Monitoring Locations	23
2.3.2	IDDE Source Investigation and Corrective Actions.....	24
2.3.3	IDDE Information Panel and Brochure.....	25
2.4	Construction Site Runoff Control Program	25
2.5	Pollution Prevention/Good Housekeeping Program	26
2.5.1	High Priority Pollutants of Concern	26
2.5.2	Pollution Prevention and Good Housekeeping Practices.....	26
2.6	Post-Construction Stormwater Management Program	29
2.7	Carnegie SVRA OHV Trails and Facility Management	29
2.7.1	Site Background	29
2.7.2	Trails Program.....	30
2.7.3	Implementing the SWMP Tactics.....	30
2.7.4	Management Units and Resource Management Areas	31
2.8	Summary of Current Projects	36
2.8.1	Road Reconstruction Project	36
2.8.2	Valley Floor Fence Project	37
2.8.3	Reopening of West Franciscan RMA.....	37
2.8.4	Harrison RMA Causeways.....	38
2.8.5	Tesla Property Emergency Repair	39
2.8.6	Geotechnical Investigation at SRI Crossing	40

3 Progress of the Altamont Sector Stormwater Program SVRA Stormwater Program..... 42

3.1 Short-Term Progress..... 42

3.1.1 Stormwater Monitoring Data 42

3.1.2 Wet Weather Trail Closures 44

3.2 Long-Term Progress..... 45

3.2.1 Annual Trail Condition Evaluations 45

3.2.2 Sediment Basin Maintenance..... 47

3.2.3 Sediment and Erosion Control BMP Evaluations 48

3.2.4 Trash Assessment 49

3.2.5 Rehabilitating Trails and Re-Establishing Vegetation 50

3.2.6 Photo Monitoring Program 53

3.3 Program Modifications..... 54

Table of Figures

Figure 1-1: Regional map of Altamont Sector. 6

Figure 2-1: Sector Interpreter talking to a member of the public..... 9

Figure 2-2: Illegal Dumping educational brochure in English and Spanish..... 10

Figure 2-3: New “Stay on Trail” posters in English and Spanish..... 11

Figure 2-4: New riparian area interpretive panel. 12

Figure 2-5: New double-sided “Stay on Trail” interpretive panel. 13

Figure 2-6: The State Parks electric Chevy at the 2nd Annual Carnegie Parade of Lights. 14

Figure 2-7: Altamont Sector Interpreter leading a history ride at Carnegie SVRA. 15

Figure 2-8: Watershed model that was completed in Year 12. 16

Figure 2-9: Rattlesnake awareness post on Carnegie SVRA Facebook page. 17

Figure 2-10: Junior Rangers Educational Booth set up at the Kids’ track area..... 18

Figure 2-11: Biannual staff training in Year 11..... 19

Figure 2-12: Contained samples of common stormwater pollutants..... 19

Figure 2-13: Simulated IDDE scenario for staff training..... 20

Figure 2-14: Carnegie Advisory Team Meeting..... 21

Figure 2-15: Reporting Procedures for Potential Illicit Discharges..... 24

Figure 2-16: Example of installed storm drain marker..... 25

Figure 2-17: Oil containment system in the Carnegie SVRA Maintenance Yard..... 28

Figure 2-18: BEAM Global EV charger at the Altamont Sector office..... 28

Figure 2-19: Hill climb information panel encouraging riders to stay on trail..... 30

Figure 2-20: Map of Carnegie SVRA Management Units..... 31

Figure 2-21: Bulletin board at entrance kiosk with RMA closures..... 32

Figure 2-22: Map of Rehabilitated RMAs as of June 2025..... 34

Figure 2-23: Example of signage used for trail closures due to off-trail riding..... 35

Figure 2-24: Completed creek delineation fencing at Corral Hollow Creek..... 37

Figure 2-25: Altamont Sector staff and Greater Valley Conservation Corps members celebrating the reopening of the West Franciscan RMA..... 38

Figure 2-26: Drainage causeway installed in Harrison RMA..... 39

Figure 2-27: Drone photo of the emergency repair at the Tesla property. 40
Figure 2-28: Pre-construction training meeting for the SRI geotechnical investigation project... 41
Figure 3-1: Turbidity monitoring sites 43
Figure 3-2: Carnegie SVRA Trail Evaluations Results from Year 12 47
Figure 3-3: Vegetation Community Map at Carnegie SVRA 51

Table of Tables

Table 2-1: 2024 Phase II Permit Altamont Sector Staff Assessment Results 22
Table 2-2: 2024 Public Assessment Results 22
Table 2-3: RMA Rehabilitation Status 33
Table 3-1: Turbidity (NTU) Data for BMP Monitoring Effectiveness 43
Table 3-2: Total Suspended Sediments (TSS) Data for BMP Monitoring Effectiveness 43
Table 3-3: Wet Weather Closures 44
Table 3-4: Annual Trail Ratings 46
Table 3-5: Rainfall Totals and Sediment Basin Material Removal Volumes 47
Table 3-6: Evaluation Summary of BMP Installations 48
Table 3-7: Baseline Trash Assessment 49
Table 3-8: Baseline Trash Load Calculations 50
Table 3-9: Carnegie SVRA Mapped Vegetation Types and Acreage 52

Appendices

Appendix A – 2024-2025 Effectiveness Assessment

Appendix B – Public Education and Outreach Material

Appendix C – Pollutant Source Maps

Appendix D – IDDE Program Inspection Forms

Appendix E – Construction Site Management Program Checklist

Appendix F – MS4 Hotspot and Facility Inspection Form

Appendix G – Off-Trail Riding Inspection Form

Appendix H – Stormwater Quality Sampling Form

Appendix I – Trail Evaluation Form

Appendix J – On-Land Visual Trash Assessment Forms

1 Purpose

The California State Parks Diablo Range District Altamont Sector (Altamont Sector) Stormwater Management Plan's (SWMP, 2012) purpose is to reduce or eliminate potential pollutant discharges from State Parks properties within the Sector using site-specific structural and non-structural best management practices (BMPs) to protect and improve water quality, while also providing high quality Off-Highway Vehicle (OHV) recreational opportunities at Carnegie State Vehicular Recreation Area (Carnegie SVRA).

The Altamont Sector formally implemented the SWMP in February of 2012. The SWMP requires that an annual report be developed, as well as submitted to the Central Valley Regional Water Quality Control Board (CVRWQCB), if requested. The purpose of the annual report is to provide the status of measurable goals and summarize monitoring information collected during the reporting period. In July 2013, Altamont Sector submitted a Notice of Intent for and received coverage under the Phase II Small Municipal Separate Storm Sewer System (MS4) General Permit (Phase II Permit) as a Non-Traditional Permittee. The SWMP implementation is often performed in conjunction with the Phase II Permit compliance activities.

In Year 11, the Organization name was changed from Carnegie SVRA to Altamont Sector, since the State Legislature passed Senate Bill 155 in 2022, which codified that Alameda-Tesla (and accordingly the Tesla Mine) would no longer be part of Carnegie SVRA. Therefore, many references to Carnegie SVRA have been updated throughout this report. The Phase II Permit requires the submittal of an Annual Report to summarize the previous year's compliance efforts. An Effectiveness Assessment (EA) has been created to provide the information requested in question number 55 of the 2024-2025 Annual Report, which includes the following (Appendix A):

- A description of the implementation of the Program Effectiveness Assessment and Improvement Plan (PEAIP);
- A summary of the data obtained by conducting a program EA;
- An analysis of the EA data; and
- A summary of the short and long-term progress of the stormwater program.

The SWMP details activities used to evaluate and improve the stormwater program's impact on water quality, such as rehabilitation of OHV riding areas, installing BMPs, inspecting Resource Management Areas (RMAs), and monitoring stormwater. Each year, the Phase II Permit Annual Report, which includes the EA, summarizes the previous year's SWMP activities and is submitted electronically to the State Water Resources Control Board (State Water Board). The SWMP Annual Report summarizes the data in a similar format, and also includes photo points, as well as additional water quality data. The SWMP Annual Report is drafted by Natural Resource staff and submitted for review and approval to the Diablo Range District Superintendent and Off-Highway Motor Vehicle Recreation (OHMVR) Division. SWMP Annual Reports are posted on the OHMVR Division webpage and will be made available to the CVRWQCB upon request.

The 2024-2025 reporting year marks the 14th year of SWMP implementation for Altamont Sector. After the Sector received coverage under the Phase II Permit in July 2013, the Annual Report evaluating the year from July 2013 to June 2014 became the first reporting period (Year 1). Therefore, all data for the 2024-2025 reporting year will be referenced as “Year 12.” The Year 12 SWMP data and analysis are presented in the following sections.

1.1 Site Background

The Altamont Sector comprises Carnegie SVRA, the Diablo Range District office and the Tesla Mine Complex, which is located on the neighboring Alameda-Tesla Property and is currently not open to the public. The Altamont Sector and the park units within it are operated by the Diablo Range District of the California Department of Parks and Recreation (DPR). Carnegie SVRA is located along Corral Hollow Road, between the cities of Livermore and Tracy in California (see Figure 1-1). This unit of the California State Park System is funded by the OHMVR Division. The park was purchased by the State in 1979 with the purpose of continuing to provide existing off-highway vehicle recreation previously provided by a private motorcycle park. With a diversity of terrain ranging from rolling hills to steep canyons, Carnegie SVRA has become a popular destination for off-road enthusiasts of all skill levels. The Tesla Mine Complex is located on the neighboring Alameda-Tesla Property and is an abandoned mine complex that is owned, operated, and funded by DPR. The mine is located approximately four miles west of the SVRA. The CVRWQCB has determined that the Tesla Mine Complex should be included under the Phase II Permit. Compliance with the Phase II Permit is achieved through implementation of the SWMP at Sector properties. The Diablo Range District office is located between Carnegie SVRA and the Tesla Mine Complex and is also included under the Phase II Permit coverage. It is assessed annually for potential pollutants that could discharge into Corral Hollow Creek.

Given legislative changes and geographical proximity to each other, the SVRA, the Diablo Range District office, and the Tesla Mine Complex are managed under the same SWMP and Phase II Permit. However, implementation activities are funded according to where activities occur.

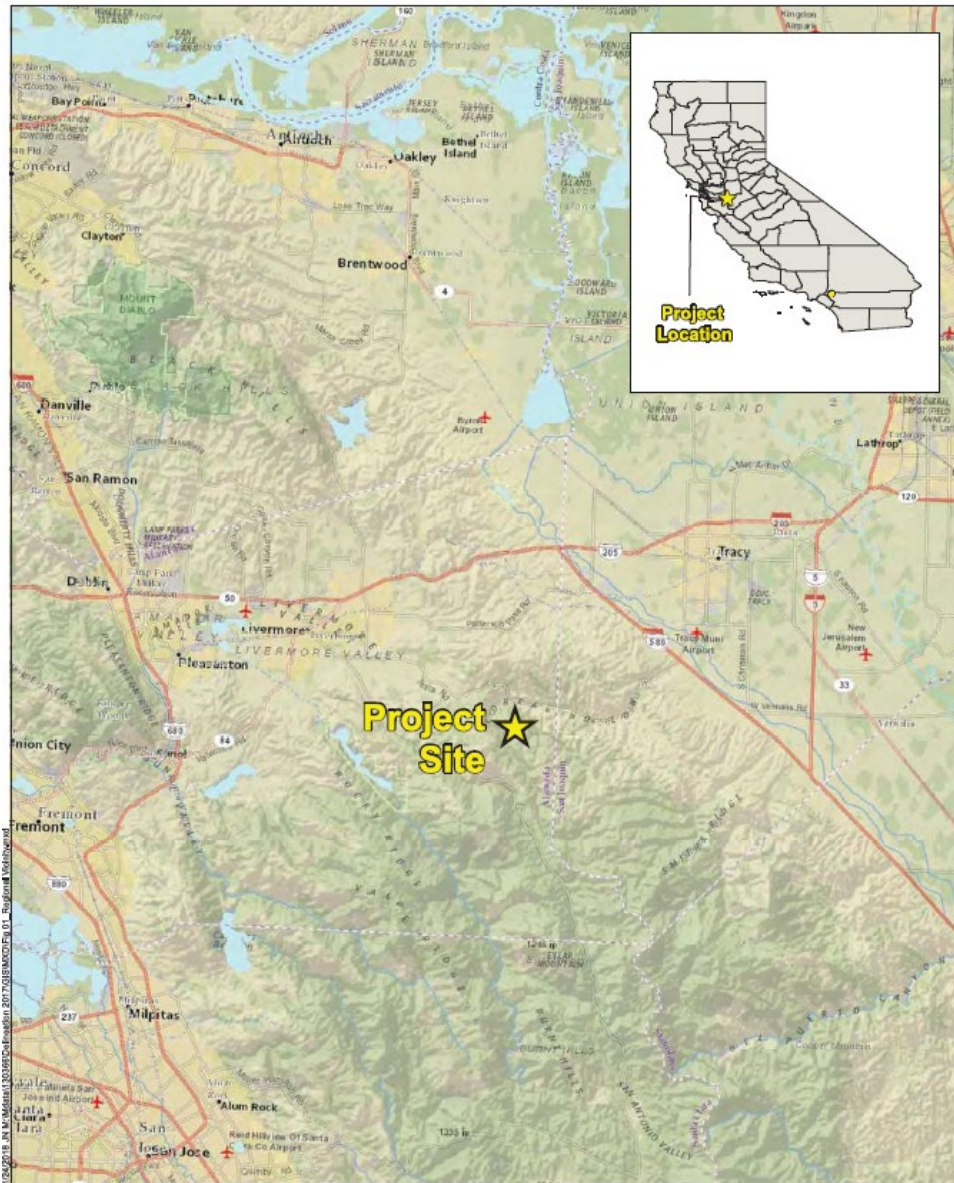


Figure 1-1: Regional map of Altamont Sector.

The OHMVR Division initiated a Stormwater Management Program at the Altamont Sector in an effort to protect the park's natural resources, improve water quality and meet the requirements of the National Pollution Discharge Elimination System (NPDES) and the Clean Water Act (CWA). In order to achieve these water quality objectives, a number of projects and programs have been planned and are being implemented.

From 2004 to 2007, the OHMVR Division contracted with Salix Applied Earth Care and Geosyntec consultants to assess the Corral Hollow watershed. The purpose of the Corral Hollow Watershed Assessment (CHWA) was to provide the OHMVR Division, Sector staff, and community stakeholders with an understanding of the historical occurrences that have shaped the watershed. The assessment was also performed to determine the existing condition of the watershed, which facilitated the development of management practices that could be applied to help improve

water quality and the overall health of the watershed. The findings from the CHWA were used to develop design recommendations, which aimed to prevent erosion and control sediment using innovative BMPs, as well as an active, adaptive management framework focused on meeting water quality objectives. The framework incorporated continual assessments for areas prone to erosion, implementation of appropriate BMPs, on-going monitoring, regular effectiveness assessments, and plans for long-term maintenance to help ensure their continued success.

The OHMVR Division Stormwater Management Program also included activities related to the Wildlife Habitat Protection Plan (WHPP; previously referred to as Habitat Monitoring System, HMS) and Soil Conservation Plan (SCP), such as the ongoing development and implementation of the Trails Management Plan (now known as the Resource Management Areas program), annual species surveys, and habitat rehabilitation activities. Additional elements included the implementation, monitoring, and maintenance of projects in compliance with the OHMVR Division Soil Conservation Standard and Guidelines, as well as the use of the OHV BMP Manual for Erosion and Sediment Control (OHV BMP Manual) when selecting, implementing, and maintaining BMPs. These items are discussed in more detail in Section 2.7, Carnegie SVRA OHV Trails and Facility Management.

1.2 Regulatory Background

In February of 2012, this SWMP was implemented with the purpose of reducing or eliminating pollutant discharges from park units within the Altamont Sector by implementing site-specific structural and non-structural BMPs that protect and improve water quality while simultaneously allowing for high quality OHV recreational opportunities at the SVRA. The SWMP addresses discharges of stormwater and authorized non-stormwater to Waters of the United States (as defined by the U.S. Environmental Protection Agency or EPA) and Waters of the State of California (as defined by the Porter-Cologne Water Quality Control Act). The SWMP also includes an OHV element dedicated to discussing management goals and activities for maintaining OHV trails and facilities as they relate to meeting water quality objectives.

The SWMP guides Sector staff on how to comply with the requirements of the latest *NPDES Waste Discharge Requirements (WDRS) for Stormwater Discharges from Small MS4s* (Order No. 2013-0001-DWQ, as amended by Order No. 2015-0133-EXEC, Order No. 2016-0069-EXEC, Order No. 2017-0031-DWQ, Order No. 2018-0001-EXEC, and Order No. 2018-0007-EXEC), issued by the California State Water Resources Control Board (SWRCB) on February 5, 2013 (SWRCB, 2013) ([Phase II Permit](#)) and effective July 1, 2013. The SWMP also helps ensure compliance with the latest *NPDES General Permit for Stormwater Discharges Associated with Construction and Land Disturbance Activities* ([State Construction General Permit](#) or State CGP) (Order No. 2022-0057-DWQ) (SWRCB, 2022).

On April 7, 2015, the SWRCB adopted an amendment to the *Water Quality Control Plan for the Ocean Waters of California to Control Trash and Trash Provisions of the Water Quality Control Plan for Inland Surface Waters, Enclosed Bays, and Estuaries of California* (together, referred to as the Trash Amendments). The Trash Amendments apply to all Phase I and II permittees that are subject to the NPDES MS4 permits.

2 Description of SWMP Implementation

The purpose of the SWMP is to reduce or eliminate pollutant discharges from Altamont Sector to the Maximum Extent Practicable (MEP), as defined by the Phase II Permit. The SWMP achieves this by providing a description of the BMPs that are currently being used or that have been proposed for stormwater management at the park. A description of BMPs for each of the following seven program areas (also referred to as Minimum Control Measures) is included in the following sections:

- Section 2.1 – Education and Outreach Program
- Section 2.2 – Public Involvement and Participation Program
- Section 2.3 – Illicit Discharge Detection and Elimination Program
- Section 2.4 – Construction Site Runoff Control Program
- Section 2.5 – Pollution Prevention/Good Housekeeping Program
- Section 2.6 – Post-Construction Stormwater Management Program
- Section 2.7 – Carnegie SVRA OHV Trails and Facility Management

The purpose of completing a SWMP Annual Report is to regularly summarize the SWMP activities from the past year. The data collected in any given year will be used to make potential improvements. It is important to note that the SWMP process is iterative, and subject to its own evaluation and revision to ensure the provided feedback is useful.

2.1 Education and Outreach Program

Public education and outreach are essential in effectively implementing the SWMP. Not only do education and outreach help ensure that water quality objectives are met, but they also promote greater support for the projects, BMPs and actions undertaken by Sector staff and Carnegie SVRA to protect water quality. The Education and Outreach Program provides information and resources to staff, volunteers, visitors, and stakeholders (the public) that will improve their understanding of the SWMP. Public education and outreach promote better compliance with minimum control measures by teaching individuals about the potential impact they and others in the community can have on receiving water bodies, including actions the public can take to protect or improve the environment. Altamont Sector has opted to fulfill the education and outreach requirements within its own jurisdiction, with some level of coordination with other organizations, to implement public education campaigns, as well as to participate in public education and outreach activities with neighboring MS4 permittees. Most educational outreach occurs through Carnegie SVRA, since the Tesla Mine Complex is currently not open to the public.



Figure 2-1: Sector Interpreter talking to a member of the public.

A majority of Public Education and Outreach is conducted through Carnegie SVRA's existing Interpretive Program. The Interpretive Program addresses natural and cultural resource topics, and is composed of a variety of outreach programs including:

- Junior Ranger Programs
- School Group Tours
- PORTS Programs and PORTS-casts
- Interpretative Panels
- Brochures (available in English and Spanish) and other written information
- Social Media Posts

Altamont Sector also hosts a variety of public education and outreach events throughout the local community. These events are discussed in more detail in Section 2.1.4.

2.1.1 Website

The Carnegie SVRA website has a [Resource Management page](#) with information on Resource Management Areas (RMAs) and Stormwater Quality. On this page, links to the Stormwater Quality Brochure and RMA map are available, as well as a copy of the SWMP, Carnegie's wet weather closure policy, and other educational resources. Additionally, Annual Reports related to the SWMP can be found on the [Off-Highway Motor Vehicle Recreation Division's webpage](#).

Carnegie SVRA was affected by a destructive series of atmospheric river storms in early 2023, resulting in an extended closure of the entire park while staff conducted extensive repairs. This closure affected sector staff's ability to host interpretive events for the public in Year 10, but in Year 11 the Altamont Sector Interpretation staff continued to keep members of the public informed about park updates and repair progress. One creative way that Sector staff conveyed the extensive damages and necessary repairs to the public was by sharing an ESRI [StoryMap](#) in August 2023 on Carnegie's website via social media and via QR code at park events. The StoryMap was also shared with the Carnegie Advisory Team and with regulatory agencies as a tool to portray the damage the park received from the winter storms and to highlight how diligently staff worked to get the park reopened after the storms.

During this reporting period, Altamont Sector Interpretive staff began developing another ESRI StoryMap to inform user groups about the Carnegie SVRA Resource Management Areas (RMAs) and how these areas are promoting sustainable OHV recreation by increasing vegetation cover in riding areas and reducing erosion potential by keeping users on trail. This StoryMap will be available to the public in Year 13.

2.1.2 Educational Brochures

Sector staff maintain an educational SWMP brochure to help SVRA visitors understand how they can protect and improve water quality. The brochure describes the pollutants of concern and how visitors can prevent them from negatively affecting water quality. In 2023, the interpretation staff updated the SWMP brochure with a new design (Appendix B) to be shared with visitors through the [website](#), social media, and in the park. In Year 11 and Year 12, the distribution of the SWMP brochure continued at the park kiosk, the Information Station on the weekends, and at in-park special events. This brochure is also available online on the Carnegie SVRA webpage and is shared on social media throughout the year.



Figure 2-2: Illegal Dumping educational brochure in English and Spanish.

To supplement the SWMP brochure, Sector staff created two new brochures in Year 11 to describe the importance of SWMP compliance and how visitors can help minimize pollutants at Carnegie SVRA. One brochure addresses illegal dumping within the park and directs visitors to report illegal dumping to park staff immediately if witnessed (Figure 2-2). The brochure identifies several ways that visitors can address pollutants of concern, such as fixing drips or leaks on their OHV, throwing trash away in a garbage can, and recycling old tires and motor oil. The second brochure discusses RMAs and the importance of staying on trail when riding in these areas, then displays a map of the RMAs in Carnegie SVRA where OHV-users are expected to stay on trail. Both

brochures are available in both English and Spanish and were readily distributed to park visitors throughout this reporting period.

During this reporting period, the Altamont Sector Interpreter created new “Stay on Trail” posters in both English and Spanish (Figure 2-3). These posters were hung in highly trafficked areas of Carnegie SVRA to encourage users to stay on trail. Sector staff noticed that incidences of off-trail riding decreased with the increased posting of this message. The Altamont Sector Interpreter also hung these posters in restrooms throughout the SVRA, which was also believed to have been correlated with the decrease in incidences of off-trail riding. Altamont Sector Interpretation staff will continue to post these posters throughout Carnegie SVRA and on Carnegie SVRA social media platforms to help further spread the message.



Figure 2-3: New “Stay on Trail” posters in English and Spanish.

2.1.3 Interpretive Panels

A series of interpretive panels help explain the SWMP and its components to Carnegie SVRA’s visitors. Four of the panels describe different habitats in the park and discuss how different plants and animals are affected by water quality. Other panels explain how water quality is impacted by illicit discharges and erosion. Panels are installed at the park store where visitors congregate and throughout the park in highly trafficked areas. These panels aim to make visitors aware of the importance of protecting water quality and suggest practical ways to help, such as staying on trail when recreating in RMAs. All interpretive panels installed in the park are included in Appendix B.

In Year 12, staff installed a riparian area panel that describes how park staff are working to restore Corral Hollow Creek and what park visitors can do to continue to protect it (Figure 2-4). The panel

includes a watercolor painting of the riparian area and explains how native plants and animals use the creek. The panel is interactive with flaps that visitors can lift to see what is happening underground in the riparian area.



Figure 2-4: New riparian area interpretive panel.

During Year 12, Altamont Sector staff created several double-sided "Stay on Trail" panels to be placed throughout various RMAs in the trail system in the hills (Figure 2-5). These panels were completed and delivered to Altamont Sector within this reporting period. The new panels will be installed in Year 13. They will direct users to Stay on Trail in both English and Spanish, and the back side of the panel includes a map of Carnegie SVRA with a locator to show riders where they are currently located in the park.



Figure 2-5: New double-sided “Stay on Trail” interpretive panel.

Additional panels with the same design will be created and installed in subsequent program years as a continued effort to increase public awareness of the importance of recreating on trail while in RMAs to protect park resources.

2.1.4 Special Events

Carnegie SVRA hosts and organizes special events for the public throughout the year, from extreme motor sport events to safety rides. In Year 12, Carnegie SVRA hosted two Hillclimb events, where skilled motorcyclists race to compete for the best time interval in a Verti cross event, as well as hosting the annual Visitor Appreciation Day where entry into the SVRA is free for all visitors. In recent years, Altamont Sector has been trying to increase its public outreach and community participation. In Year 11, Altamont Sector staff attended an event hosted by the Tracy Chamber of Commerce at the neighboring Tracy Fire Department Sector staff were able to tour the Fire Department’s facilities to learn about how potential pollutants are reduced at their facility. Altamont Sector hosted its second annual [Parade of Lights](#) on December 14, 2024. Sector staff also participated in various local community events during this reporting period, including the Mountain House Fire Department Pancake Breakfast, Livermore Police Department Trunk or Treat, and the City of Tracy Light Parade, where Carnegie SVRA took home the second-place award for the best dressed float.



Figure 2-6: The State Parks electric Chevy at the 2nd Annual Carnegie Parade of Lights.

2.1.5 Educational Booth and Information Station

An educational booth is set up once per month from October through April and at all special events hosted within the Altamont Sector to allow Sector staff to educate and inform SVRA visitors about how to recreate responsibly by protecting wildlife, habitats, cultural resources, and water quality. Materials available at the booth include the SWMP brochure, an RMA flyer, maps of the SVRA and information on animals and habitats found within the park. The educational booth at special events typically reaches three hundred visitors per day, whereas the average reach of the educational booth on an average weekend reaches around thirty visitors per day. In previous reporting periods, an information station was held once per month next to the SVRA store, but staff have opted to discontinue the information station and focus their efforts on other opportunities to inform the public on how they can protect water quality and other resources while recreating at Carnegie SVRA.



Figure 2-7: Altamont Sector Interpreter leading a history ride at Carnegie SVRA.

The Altamont Sector Interpreter is constantly developing new and creative ways to effectively inform SVRA visitors of SWMP elements. In Year 9, the Altamont Sector Interpreter constructed an erosion box to demonstrate how vegetation helps keep sediment in place and captures it as it erodes, which helps reduce the amount of sediment that ends up in a receiving water body. During this reporting period, the Interpreter obtained a model of the Corral Hollow Creek Watershed to use for future demonstrations (Figure 2-8). Having this watershed model will allow the Altamont Sector Interpreter to present SVRA visitors with visual examples of how processes in the watershed can be influenced by illicit discharges or illegal dumping, as well as how these things can affect recreational opportunities at Carnegie SVRA. The watershed model was completed in May 2025 during the Year 12 reporting period. The Sector Interpreter is planning Junior Rangers activities that will put the watershed model to use for Year 13.



Figure 2-8: Watershed model that was completed in Year 12.

2.1.6 Social Media

Carnegie SVRA's [Facebook](#) and [Instagram](#) pages are effective means for communicating with the public about the Altamont Sector's SWMP and its requirements. Posts are made several times a week to keep the public informed about park projects, events, and closures. The social media posts also include "Wildlife Wednesday" posts to highlight how to identify, respect, and protect wildlife species that inhabit the SVRA, such as the featured post below which helps visitors tell the difference between a venomous rattlesnake and a harmless gopher snake.

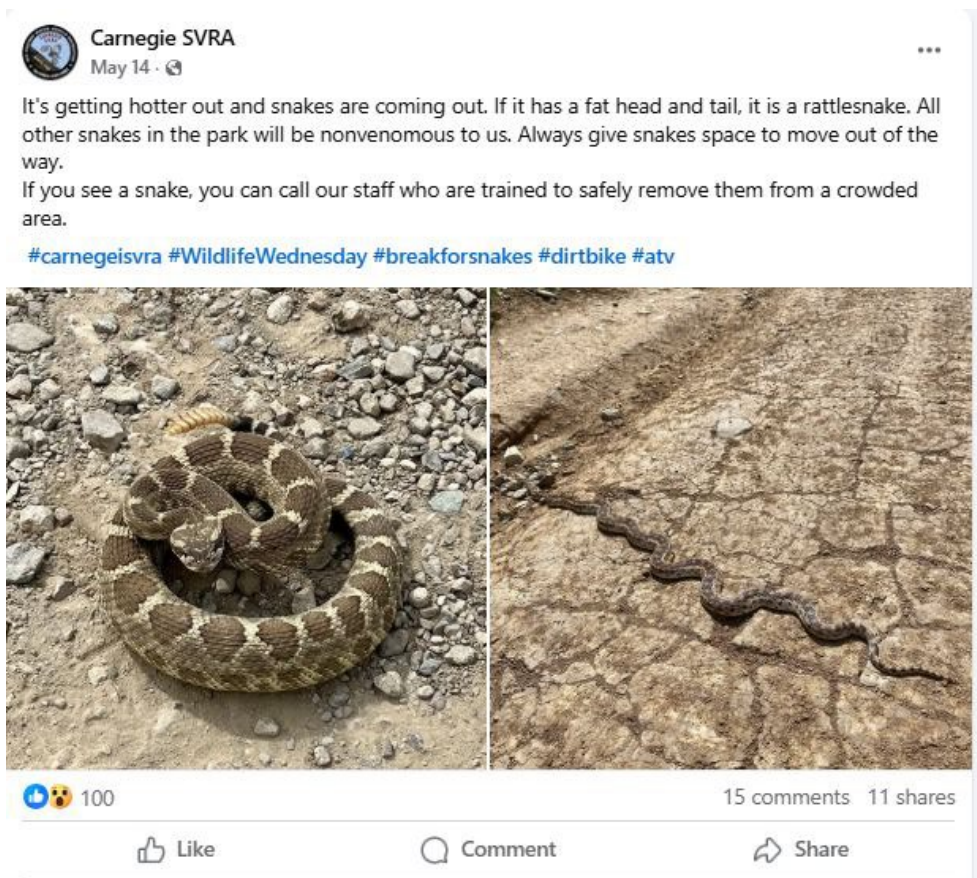


Figure 2-9: Rattlesnake awareness post on Carnegie SVRA Facebook page.

Updates from the Carnegie Volunteer Trail Maintenance crew were posted to the social media pages to spread awareness about the volunteer program and let followers know how they can get involved. Social media posts were also made to promote community engagement programs at Carnegie SVRA, such as the partnership with Brighter Christmas to collect gift donations for local families in need in exchange for a free day-use entry into the park. As of June 2025, Carnegie's Facebook account has over 10,000 followers and Facebook posts receive 75,579 views on average, with an average reach of 192,985 users per year. Carnegie SVRA's Instagram account has 8,920 followers, with an average reach of 5,588 users per post, with average views of 50,710 per post.

2.1.7 Junior Rangers

Since 2021, the Sector's Interpretation staff have hosted an educational booth for kids at Carnegie SVRA known as the Junior Rangers. The booth is stationed near the kids track area and is set up one to two times per month between September and May. Each Junior Ranger booth has a different theme, including Safety, Archaeology, Wildlife, Geology, Birds of Prey, Insects, Snakes, and Wildflowers. The Interpretation staff plans to create more themes, including a watershed theme planned for the 2025-2026 reporting period that will incorporate the watershed model discussed in Section 2.1.5. The Junior Ranger booths provide a great opportunity to reach the younger generation of riders and educate them about protecting wildlife, habitats, and the

importance of reducing the effects of stormwater runoff by staying on trail when riding at Carnegie SVRA.



Figure 2-10: Junior Rangers Educational Booth set up at the Kids' track area.

2.1.8 School Field Trips and PORTS

In previous reporting periods, the Sector Interpretation staff arranged field trips from local school groups to visit Carnegie SVRA and learn about topics such as animal adaptations and the history of the Carnegie Brick and Pottery Plant. During this reporting period, Sector Interpretation staff began presenting PORTS (Parks Online Resources for Teachers and Students), which provides direct to classroom programs focused on the natural, cultural, scientific or historic resources that can be found within the 55 participating California State Parks with PORTS presenters. Sector Interpretation also participated in PORTScasts, where multiple classrooms can join in on the Interpreter's presentation but the Interpreter cannot interact with the classrooms as in PORTS presentations. PORTS and PORTScasts have been very successful for Altamont Sector Interpretation staff and the Sector will continue to participate in PORTS as a component of education and outreach.

2.1.8 Volunteer Programs

Two volunteers were added to the growing trail maintenance team in Year 10, and one more was added in Year 11. Currently, the SVRA has a total of eleven volunteers within two volunteer programs: Trail Patrol and Trail Maintenance. The Trail Patrol has been active for over 30 years and assists the Rangers with monitoring park trails to enhance visitor safety. The Trail Maintenance program was created in October 2021 and works with the Natural Resources Trail Crew to help maintain park trails. Volunteer trail maintenance workdays take place on the 2nd Sunday of each month from 8am to 12pm. Visitors interested in joining the volunteer trail maintenance program can inquire at the entrance kiosk or through the Carnegie SVRA webpage. All volunteers help to educate the public about the importance of staying on the trails. Volunteers learn about the Sector's SWMP and its importance during training and in the volunteer manual.

2.1.9 Biannual Staff Training

Over the last decade, Michael Baker International has served as the SVRA's stormwater consultant and has developed and presented biannual training for Altamont Sector staff. Training courses typically review Altamont Sector's Illicit Discharge Detection and Elimination (IDDE) Program, as well as the Pollution Prevention and Good Housekeeping (PPGH) Program.



Figure 2-11: Biannual staff training in Year 11.

In Year 11, Michael Baker International and Division Park staff set out to identify opportunities to make the stormwater training an even more enjoyable process by improving training activities and increasing excitement, access, and participation. In addition to competitive games such as Stormwater Bingo, hands-on activities were also included to enhance the attendees' understanding of potential stormwater pollutants and required IDDE procedures. Additionally, contained samples of common stormwater pollutants were created to show attendees what to look for when identifying potential illicit discharges (Figure 2-10).



Figure 2-12: Contained samples of common stormwater pollutants.

As part of the training, several illicit discharge scenarios were simulated outdoors. Staff were encouraged to collaborate and discuss next steps for handling the illicit discharge (Figure 2-13).

For each scenario, groups had the opportunity to fill out and submit digital IDDE inspection forms, as well as discuss next steps and pollution prevention methods related to the illicit discharge.



Figure 2-13: Simulated IDDE scenario for staff training.

While IDDE and PPGH training were not provided by Michael Baker International during this reporting period, Altamont Sector staff held a short refresher training course for staff to improve the annual staff assessment results. The annual assessment was administered to gauge Sector staff's understanding of water quality issues. Results are discussed in Section 2.2.2, Target Audience Awareness.

2.1.10 Carnegie Advisory Team

The Carnegie Advisory Team (CAT) first met in 2013 to provide input on park projects and operations that relate to the user's recreational experience and safety. The overall goal of CAT meetings is to give stakeholders and members of the public the opportunity to meet with park staff to present ideas, complaints, and views on current projects, future projects, operations, and public outreach. CAT meetings provide a forum for park staff to inform stakeholders of park functions, planning and regulations, and how they pertain to the way the park is or will be operated. This partnership allows management to hear the visitors' ideas and concerns and consider them when making decisions that will affect the park. After a brief hiatus due to COVID-19, the CAT meetings resumed in January of 2023 and continue to be held monthly with Sector staff, SVRA visitors, and stakeholders in attendance. Information about how to join Carnegie's Advisory Team and when meetings are hosted are available on the SVRA's main website, as well as [shared on social media](#) throughout the year. Figure 2-14 shows Fiona Catalano, Altamont Sector Interpreter, talking to CAT about the SWMP and how off-trail riding may lead to additional sediment in Corral Hollow Creek.



Figure 2-14: Carnegie Advisory Team Meeting

2.2 Public Involvement and Participation Program

2.2.1 Public Involvement

To effectively implement a SWMP, engaging the public is critical to fostering an understanding of their role in its implementation. Public involvement and participation help ensure the SWMP reflects the actions and efforts stakeholders have committed to in support of reducing pollutant discharges, promoting safe and responsible use of park facilities, and following all park rules in order to protect and improve water quality. In addition, engaged individuals will be valuable connections to other citizen and government groups in the community.

2.2.2 Target Audience Awareness

The primary target audience for the Altamont Sector Stormwater Program includes Altamont Sector staff and Carnegie SVRA visitors. Assessing awareness is achieved by surveying and/or testing the target audience.

In Year 12, assessments were completed by 48 Altamont Sector staff members and 5 contractor staff members. The assessment's level of difficulty has slightly increased over recent years to better gauge park staff's understanding of more in-depth water quality issues. The 24-question assessment included questions related to sediment, trash, IDDE, PPGH, as well as general storm water awareness. Assessment results are presented in Table 2-1 below:

Table 2-1: Year 12 Phase II Permit Altamont Sector Staff Assessment Results

Question Category ¹	Average % Correct	Number of Questions
Sediment	96%	1
Trash	99%	3
IDDE	94%	8
PPGH	94%	7
General Stormwater Awareness	90%	5
All Questions	94%	24

NOTES:

(1) The IDDE, PPGH, and General Stormwater Awareness questions addressed specific water quality concerns associated with the topic, while simultaneously incorporating potential pollutants into the questions as well (e.g., sediment and trash).

The results suggest that the Altamont Sector staff have a high level of understanding of the water quality topics covered, despite the increased level of assessment difficulty.

A 17-question knowledge assessment was completed by 90 Altamont Sector visitors in Year 12. The average score of the visitor assessments was 87 percent correct. Table 2-2 summarizes the subject of each assessment question, as well as the average percent correct for each question.

Table 2-2: Year 12 Public Assessment Results

Subject of Assessment Question	Average % Correct
The main goal of establishing Resource Management Areas	80%
Carnegie’s biggest stormwater pollutant of concern	69%
Where polluted runoff ends up after entering a storm drain	79%
Recreational impacts associated with excess sediment in creeks	96%
Environmental impacts associated with excess sediment in creeks	90%
Environmental impacts associated with off-trail riding	94%
Oil and grease impact on water quality	98%
How riders can help reduce sediment in water	94%
Why trash is a stormwater pollutant	98%
Approved vehicle washing locations *	56%
Proper disposal of waste from gray/black water tanks	99%
Approved vehicle maintenance/repair locations *	72%
How to prevent pathogens from entering nearby creeks *	71%
Best practices when refueling OHV	93%
Appropriate trash disposal practices	91%
Approved motor oil disposal location	97%
What to do in the event of an oil, gas, or waste spill	96%
All Questions	87%

* Multi-part question (i.e. needed to select all correct answers to receive the point)

In the past, the visitor survey was made available in-person, but since the onset of COVID-19, assessments have been distributed via social media. Visitors were incentivized to complete the assessment with a coupon for a free day of entry to Carnegie SVRA and the chance to enter to win one Annual OHV Parks Pass donated by Parks California.

The goal set by the Altamont Sector Stormwater Program was to achieve an average visitor assessment score greater than 90 percent, which would indicate a high level of understanding of water quality issues. With this goal not met, Altamont Sector staff will continue to post and distribute educational materials in support of achieving a high level of visitor awareness. SVRA knowledge assessments will continue to be administered annually to measure target audience awareness of water quality issues. Assessment questions are reevaluated annually based on the previous year's results, and updates are made in an effort to decrease confusion while continuing to accurately assess and educate the public.

2.2.3 Target Audience Actions

The actions of target audiences are evaluated by performing site investigations and by internally tracking stormwater program progress (e.g., illicit discharges, RMA closures, sediment and erosion control evaluations). The progress of these stormwater programs is discussed in the following sections.

2.3 Illicit Discharge Detection and Elimination Program

The Altamont Sector developed and implemented an Illicit Discharge Detection and Elimination Program (IDDE) to detect, investigate and eliminate illicit discharges, including illegal dumping, into its MS4 system. Although some constructed drainage features do exist within the Sector, there are no large storm drain systems to manage stormwater runoff from the park units within the Sector. Runoff from Altamont Sector infiltrates, evaporates, or directly enters local water bodies. The IDDE Program helps identify locations with high risk of pollutant introduction, identify illicit non-stormwater discharges, report illegal dumping and eliminate these issues.

2.3.1 IDDE Program Monitoring Locations

Five facilities at Carnegie SVRA within the Altamont Sector were originally identified as areas that had potential to generate an illicit discharge to a receiving water: the Maintenance Yard, the Ranger Station, the Store, the Campground, and the Water Treatment Facility. These five facilities were monitored quarterly as part of the IDDE Program from April 2013 to 2017; however, in 2018, IDDE inspections shifted from a quarterly monitoring schedule to incidental inspections. The Tesla Mine Complex and the Carnegie Maintenance Yard were both identified as Hotspots. As such, they have continued to be inspected on a quarterly basis, as required by the Phase II Permit. Incidental IDDEs that are detected from daily monitoring or incidental observations by Sector staff are immediately reported on and the source of the IDDE is inspected within 72 hours of detection. Pollutant source maps for the original five facilities are included in Appendix C.

2.3.2 IDDE Source Investigation and Corrective Actions

Beginning in April 2013, monthly and post-storm event inspections were performed for the five facilities identified in Section 2.3.1. The forms used for monthly and storm event inspections can be found in Appendix D. In 2015, the OHMVR Division updated their IDDE program procedure to better align with the Phase II Permit requirements, which identified that illicit discharges will be detected in one of two ways:

1. Sector staff identification during normal day-to-day operations
2. Complaint-driven investigation from SVRA visitor reports

Beginning in 2018, the Altamont Sector began implementing the new IDDE procedure. The Carnegie Maintenance Yard and the Tesla Mine Complex have continued to be inspected on a quarterly basis, in compliance with the Phase II Permit (i.e., Hotspot inspections). The campgrounds are inspected once per year during the Annual Facility Assessments (discussed in Section 2.5.2). The three other facilities identified in Section 2.3.1 are not inspected on a set schedule; instead, any illicit discharge that may originate from these sites is identified by Sector staff during normal day-to-day operations and is reported immediately to the Altamont Sector Environmental Scientist.

In Year 11, the reporting procedure for IDDEs within the Altamont Sector was updated and report collection was moved to Survey123, an ArcGIS managed platform. Survey123 easily allows Sector staff to access the IDDE report form by scanning a QR code found on the IDDE procedure cards located in each Sector vehicle (Figure 2-15), where staff answer a set of questions and uploads photos from the inspection. Sector staff continued to use Survey123 for inspections throughout Year 12.

There were two “complaint” driven inspections during the Year 12 reporting cycle. Pollutant-related illicit discharge tracking will continue annually, with the goal of ensuring continued elimination of their occurrence.

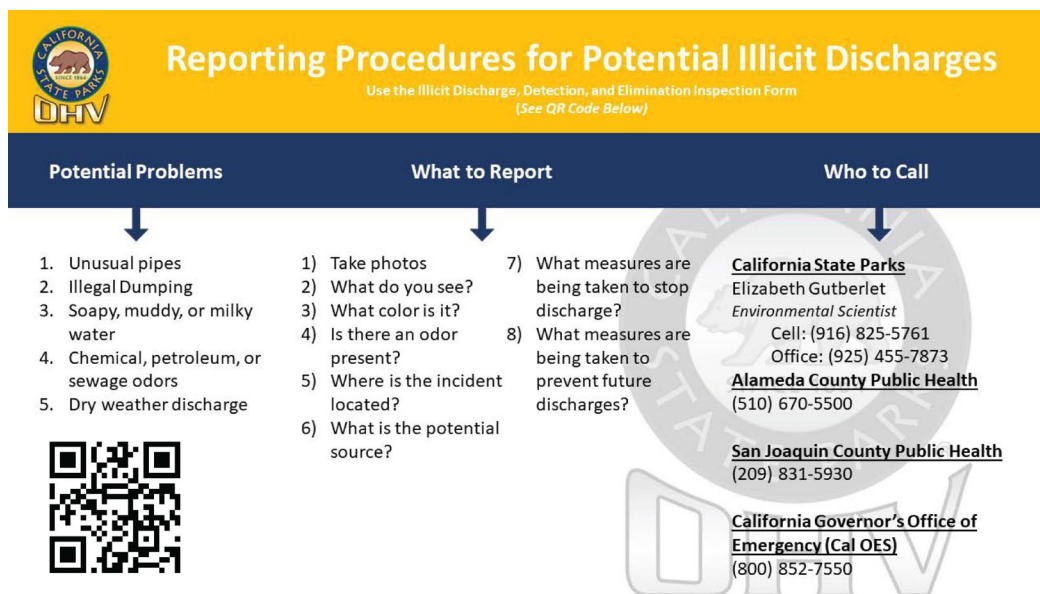


Figure 2-15: Reporting Procedures for Potential Illicit Discharges

2.3.3 IDDE Information Panel and Brochure

In an effort to help prevent future illicit discharges, an IDDE information panel was created and is included in Appendix B. These information panels have been posted in areas where visitors commonly congregate, such as near the park store and on the campground ramadas. The IDDE information panel is currently posted near the entrance to the trail system at Los Osos and Carrol Canyon. This IDDE panel will be updated in a future reporting period. Educational brochures, discussed in Section 2.1.2, and interpretive panels, discussed in Section 2.1.3, are used to convey how visitors can help keep the Altamont Sector in compliance by reporting illegal dumping and maintaining OHVs to eliminate potential pollutants. These brochures are distributed to SVRA visitors at events and at the entrance kiosk. Storm drain markers have been installed throughout the park to remind visitors of the park's policy on illicit discharges: "No Dumping – Drains to Creek". These storm drain markers are imprinted with some of the wildlife species that benefit from park users and staff working to prevent illicit discharges from entering the receiving waters of Corral Hollow Creek.



Figure 2-16: Example of installed storm drain marker.

2.4 Construction Site Runoff Control Program

Clearing, grubbing, and grading activities associated with construction sites can denude large areas of vegetation, which can expose and destabilize the underlying soils. Since the natural erosion control mechanisms are removed, sediment is more easily detached and entrained in surface water runoff. As such, runoff from construction sites can have a significant impact on the quality of the receiving waters.

Construction within Altamont Sector is typically required for facilities maintenance, and occasionally a new building will be constructed, or an old building may be replaced. The Phase II Permit and State CGP specify that any construction project that is more than one acre is subject to the State CGP requirements. In addition, the Phase II Permit requires that contract language be developed to ensure that park staff or outside contractors comply with the State CGP requirements. Accordingly, a new clause was added to the Contractor Certification Clauses (CCCs) Form CCC-307 in Exhibit C, General Terms and Conditions, in the “Doing Business with the State of California” section (CA State Parks, 2007).

A runoff control program was developed and implemented to prevent construction site discharges. The program requires use of the OHV BMP Manual during construction and training for engineers and contractors. An inspection program was implemented by Sector staff using the Construction Site Management Program Checklist (Appendix E).

In the 2024-2025 reporting period, one construction project within the Altamont Sector took place that disturbed more than one acre and therefore required coverage under the CGP. This project was completed by an outside contractor with coordination through the State Parks Northern Service Center. Construction began in May 2025, and one construction site inspection was performed in this reporting period.

2.5 Pollution Prevention/Good Housekeeping Program

2.5.1 High Priority Pollutants of Concern

Altamont Sector’s Program Effectiveness Assessment and Improvement Plan (PEAIP) was developed and implemented as part of the Phase II Permit Year 2 compliance effort. It provides a focused evaluation of priority program elements and BMPs, ensuring that they are well targeted and assists in determining whether intended results are being achieved. Altamont Sector’s Stormwater Program addresses many pollutants of concern (POCs) and implements a wide range of BMPs. Consistent with Provision F.5.h. requirements, the PEAIP also presents a plan for assessing the effectiveness of a subset of prioritized BMPs that are focused on high priority POCs.

The PEAIP identifies sediment as the only high priority pollutant of concern for Altamont Sector. The potential sources of sediment within the Sector include park activities, rehabilitation activities and construction. The Altamont Sector employs several erosion control methods to manage sediment throughout the park units, including sediment basins, rock check dams, and road and trail BMPs such as rolling dips. Trail evaluations and BMP inspections occur annually at Carnegie SVRA and determine the maintenance schedule for the BMPs and trails.

2.5.2 Pollution Prevention and Good Housekeeping Practices

PPGH practices serve as Altamont Sector’s first line of defense in preventing potential negative impacts to downstream water bodies. These practices help prevent discharges from Sector facilities and activities, which ultimately help eliminate sources of potential pollution. Knowing the location of facilities and activities with a high probability of potential pollutants and inspecting them regularly are essential components of implementing this part of the program. If repairs are needed, they are prioritized for maintenance.

The Phase II Permit requires that an annual review and assessment be performed of all owned or operated facilities to determine their potential impact to surface waters. Each year, the Altamont Sector facilities listed below are reviewed and evaluated for their potential to discharge pollutants to surface waters:

- Carnegie SVRA Campgrounds
- Carnegie SVRA Hill Climb Facility
- Carnegie SVRA Maintenance Yard
- Diablo Range District (formerly Sector) Office
- Tesla Mine Complex

Based on the facility assessment, those facilities that have a high potential to generate stormwater and non-stormwater pollutants are classified as Hotspots. A Storm Water Pollution Prevention Plan (SWPPP) is developed for each facility designated as a Hotspot. The Hotspots identified as part of the Facility Assessment are visually inspected quarterly to ensure that materials and equipment are clean and orderly, to minimize the potential for pollutant discharge into the MS4 system, and to ensure effective implementation of BMPs (see Appendix F for the Hotspot inspection form). To date, the only two Hotspots covered under the Altamont Sector Phase II Permit are the Tesla Mine Complex and the Carnegie SVRA Maintenance Yard.

The inventoried facilities that are not identified as Hotspots are inspected at least once per Phase II Permit term (once every five years until rescinded by the SWRCB, or until a new Order is issued). These facilities are evaluated annually at the Altamont Sector, typically in June of the reporting period (see Appendix F for Year 12 Annual Facility Assessment Forms).

In Year 10, park staff installed a new oil containment system outside of the Carnegie SVRA maintenance shop. Prior to this new system, oil was stored on a large yellow spill containment system in the shop behind the mechanic's toolbox. The new oil containment building is fireproof with its own spill containment system. This building can store several 55-gallon drums of oil with connections to a pneumatic air system that delivers oil into the shop through a hose. This new oil containment system creates more space within the Carnegie SVRA maintenance shop and has made adding fluids to vehicles for equipment servicing much easier while also reducing the chance of a potential oil spill in the shop since oil is no longer stored inside. The system also allows used oil and fluids to be sucked back through the same system and funnels the used oil back into a 55-gallon drum. The current contractor, American Valley Waste Oil, collects the oil once the drums are filled. Sector maintenance staff then switch out the drums of oil when they are emptied and hook the air system up to a new container of oil.



Figure 2-17: Oil containment system in the Carnegie SVRA Maintenance Yard.

An electric vehicle (EV) charging station was installed during the 2018 reporting period to provide for the emerging electric motorcycle market and the riders that use them in the park. Several charging stations were also installed near the Diablo Range District Office down the road from the park in 2020. In 2022, an updated EV charging system was installed at the park entrance that now services two vehicles on a trickle charge (Figure 2-18). During this reporting period, a solar charging station was donated by BEAM Global to be stationed at the Altamont Sector office for both staff and public use. Visitors may access this charging station while at the park for no additional cost. Altamont Sector staff are currently exploring other areas within Carnegie SVRA where an EV charging station can be installed.



Figure 2-18: BEAM Global EV charger at the Altamont Sector office.

In Year 12, Carnegie SVRA received a rural electric vehicle (REV) portable electric vehicle charging station designed to support travel REV drivers. This REV charging station will be installed in Year

13 after Sector staff research the most appropriate location within the Sector to install the new EV charging station.

2.6 Post-Construction Stormwater Management Program

Site design measures are required for all projects that create and/or replace (including projects with no net increase in impervious footprint) between 2,500 and 5,000 square feet of impervious surface, including detached single-family homes that are not part of a larger plan of development.

“Regulated” projects, which include projects that create and/or replace 5,000 square feet or more of impervious surface, must incorporate site design measures, source control, runoff reduction, stormwater treatment and baseline hydromodification management to the extent feasible.

There were no projects within the Sector that met the criteria listed above during the Year 12 reporting period.

2.7 Carnegie SVRA OHV Trails and Facility Management

2.7.1 Site Background

Trail systems have the potential to alter a landscape’s stormwater drainage patterns. These alterations can lead to higher rates of erosion, which has a negative impact on stormwater quality. For this reason, careful consideration must be given to trail system design and layout. Once trails are established, careful monitoring is warranted to ensure excessive erosion does not occur.

While most of the Carnegie SVRA facilities are within the flood plain of Corral Hollow Creek, the trail system is primarily located in the steep hills to the south of the creek. These hills have four well-defined sub-watersheds, which drain to Corral Hollow Creek. Several smaller drainages proceed to Corral Hollow Creek, typically in the form of sheet flow. The trail system itself is divided into two areas: open-riding and trails-only. Approximately half of the trail system is open riding, which typically consists of grassland habitat with durable clay soils. While park visitors are generally free to travel throughout the open riding area, many portions such as the hill slopes adjacent to the valley floor have been fenced and closed in order to maintain vegetation cover and limit erosion. The other half of the park is the trails-only area, where visitors are required to stay on established trails to maintain the surrounding vegetation and limit erosion. Fencing, signage and law enforcement actions are used to increase compliance. The trails-only area consists mostly of coastal scrub, oak woodlands and more friable sand/loam soils.

The trails are categorized as primary, secondary, tertiary, and voluntary. The primary trails are accessible by all sizes of vehicles, including emergency vehicles. The secondary trails are accessible to All Terrain Vehicles (ATVs) and motorcycles. The tertiary trails are accessible by motorcycle only. Lastly, the voluntary trails are trails that have been created by unauthorized OHV recreation. Voluntary trails are blocked off or rehabilitated upon detection to prevent these trails from being used further. The primary and secondary trails receive annual maintenance, which includes grading, out sloping, installing and reconditioning of BMPs, removing outside berms and pruning vegetation. Tertiary trails are maintained as needed or as determined by annual trail evaluations and are maintained by hand tool only as equipment cannot access these trails.

Exclusion of OHV activities occur throughout the park as needed. Access for OHV use has been restricted in several areas of the park in order to improve stormwater quality and protect natural and cultural resources.

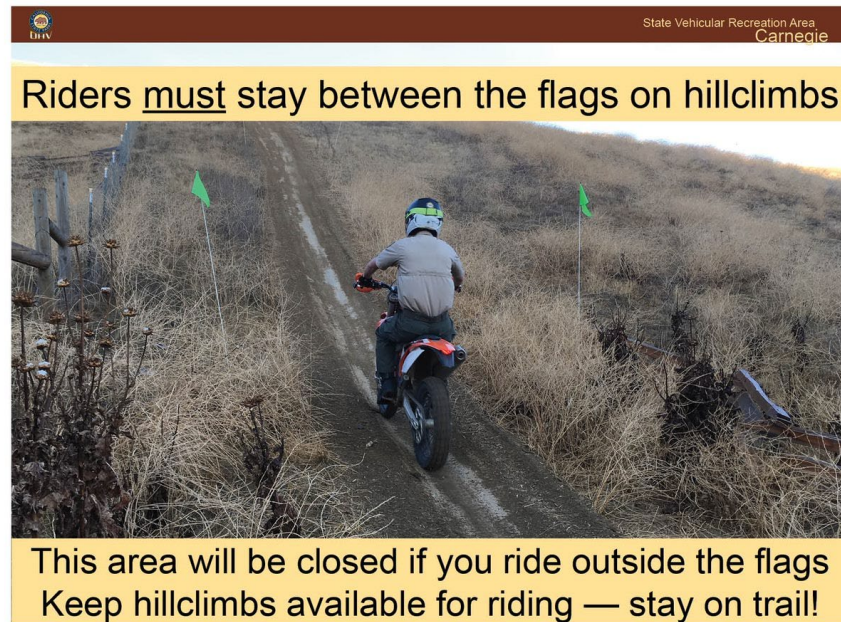


Figure 2-19: Hill climb information panel encouraging riders to stay on trail.

2.7.2 Trails Program

Carnegie SVRA's Trails Program aims to reduce sediment discharges resulting from park activities by creating sustainable, well-designed OHV trail systems, and rehabilitating erosive areas of the park. The park is divided into Management Units and Resource Management Areas, as described in Section 2.7.4. The program includes the annual evaluation and classification of trail conditions throughout the SVRA.

2.7.3 Implementing the SWMP Tactics

The tactics described below are utilized to prevent erosion and ensure successful sediment control to the MEP.

Erosion Prevention

- Reduce trail density
- Break hydrological connections
- Reduce the velocity of concentrated flows
- Develop sustainable trails
- Educate the OHV user to stay on-trail

Sediment Control

- Increase vegetation cover near drainage facilities
- Slow and settle stormwater in the sub-tributaries

2.7.4 Management Units and Resource Management Areas

Management Units are discrete zones established to better plan and implement management activities of areas that share common characteristics. There are ten Management Units at Carnegie SVRA, which are further divided into smaller areas known as Resource Management Areas (RMAs) that allow Parks staff to make more refined management decisions based on known resources, topography, soil type, and other factors (Figure 2-20).

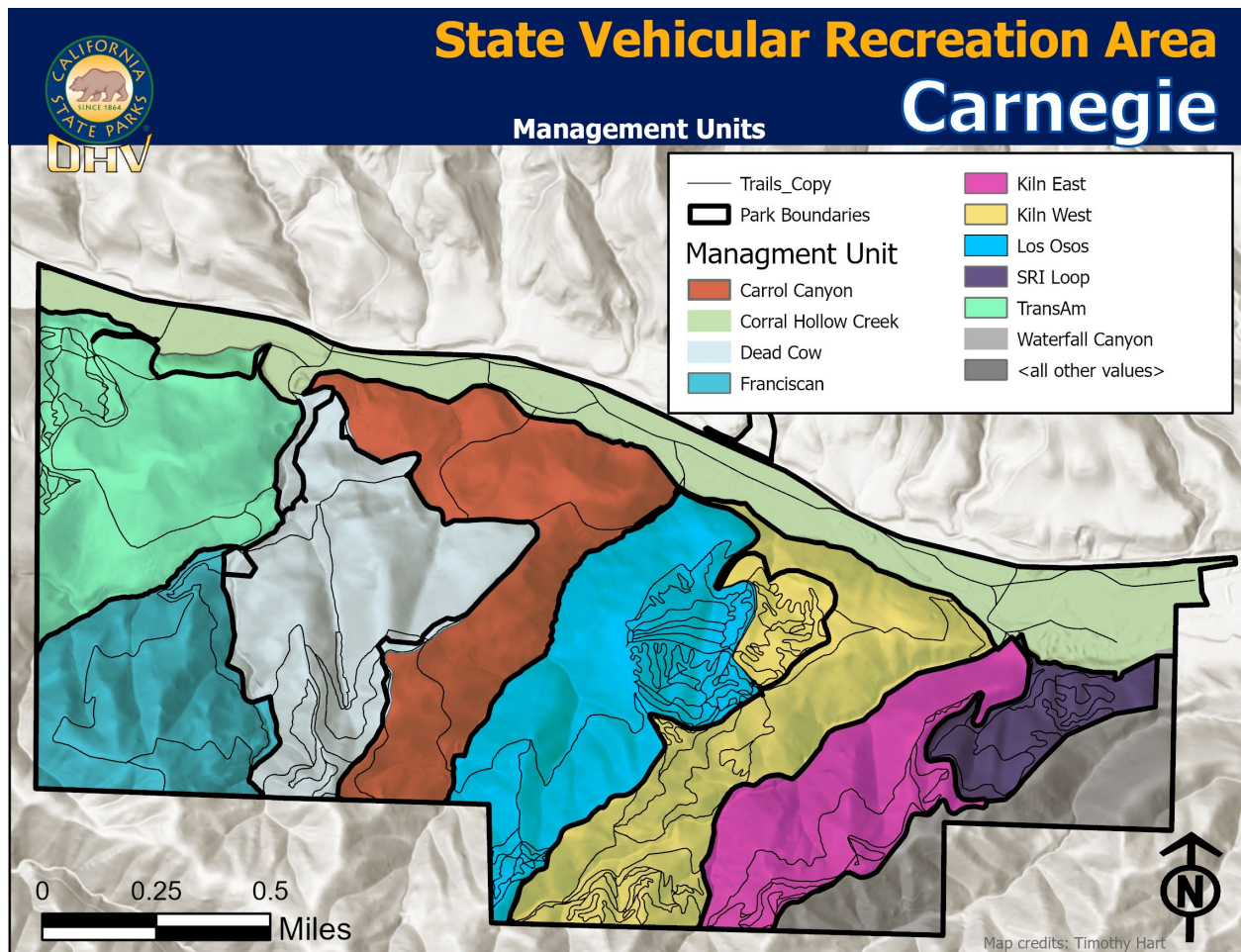


Figure 2-20: Map of Carnegie SVRA Management Units.

RMA Rehabilitation Projects

Rehabilitation of an RMA begins with a scoping meeting that identifies the problems and goals for each project. The project planning process takes into consideration several items, including trail layout, connectivity, emergency access, user interest, enforcement strategy, education methods, buffer zones and a timeline for completion of the project.

The on-the-ground rehabilitation work begins with identifying any trails that have proven to be sustainable and that do not convey high concentrations of stormwater elsewhere. These trails are usually incorporated into the RMAs trail network. Trails that have been identified as erosive per the soil conservation program dataset are eliminated from the trails network so the area can be

rehabilitated. Eliminating these trails from the network often involves using heavy equipment to place soil back on the hillside and bring the hillside back to grade. Once in place, the soil is protected using BMPs from the OHV BMP Manual. The typical BMPs used are a combination of straw wattles, which prevent soil erosion, slow the velocity of flow from water runoff and control sediment, and hydromulch, which protects the soil from detachment from precipitation. If the hydromulch machine is unable to access the area, then straw or native seed is used to cover the bare soil. Staff are trained in proper implementation techniques, and the work is supervised by experienced rehabilitation specialists. These efforts result in an overall reduction in trail density as well as a reduction of hydrological connections, two tactics outlined in this program. Special attention is given to developing buffer zones near drainages by limiting trail density and soil disturbance within these areas to provide adequate biofiltration to control sediment. RMA closures for rehabilitation can be monitored by the public on the Carnegie SVRA website, on social media, and on the bulletin board near the main park entrance kiosk (Figure 2-21).



Figure 2-21: Bulletin board at entrance kiosk with RMA closures.

When rehabilitation is complete, the focus turns toward providing sustainable trail access. In previous years, park personnel have received classroom and field training from [Trails Unlimited](#), an enterprise unit of the U.S. Forest Service, on proper trail design and construction to minimize impact on the soil and habitat. This is achieved primarily by preventing an accumulation of stormwater by using breaks-in-grade, as described in the OHV BMP Manual, which change the elevation to a positive grade at regular intervals to divide stormwater volumes into lower concentrations. These rehabilitation methods have been used in the park for several years, exhibiting high levels of success.

As of Year 12, rehabilitation efforts have been completed in all Management Units and RMAs (Table 2-3).

Table 2-3: RMA Rehabilitation Status

Management Units	RMA s	Year of Completed Rehabilitation Efforts
Corral Hollow Creek	Corral Hollow Creek	2009
SRI Loop	Roadrunner	2011
	SRI Loop	2010
Kiln East	Raven	2011
	Kiln East	2011
Kiln West	Black Bear (East and West)	2019
	Bunkhouse	2020
	Harrison Hill	2016
	The Knoll	2014
	Kiln West	2022
Los Osos	Seven Trails	2014
	Los Osos Climb	2017
	Phase 3	2019
Carrol Canyon	Hillclimb Facility	2021
Franciscan	West Franciscan	2024
TransAm	Burned Pottery	2015

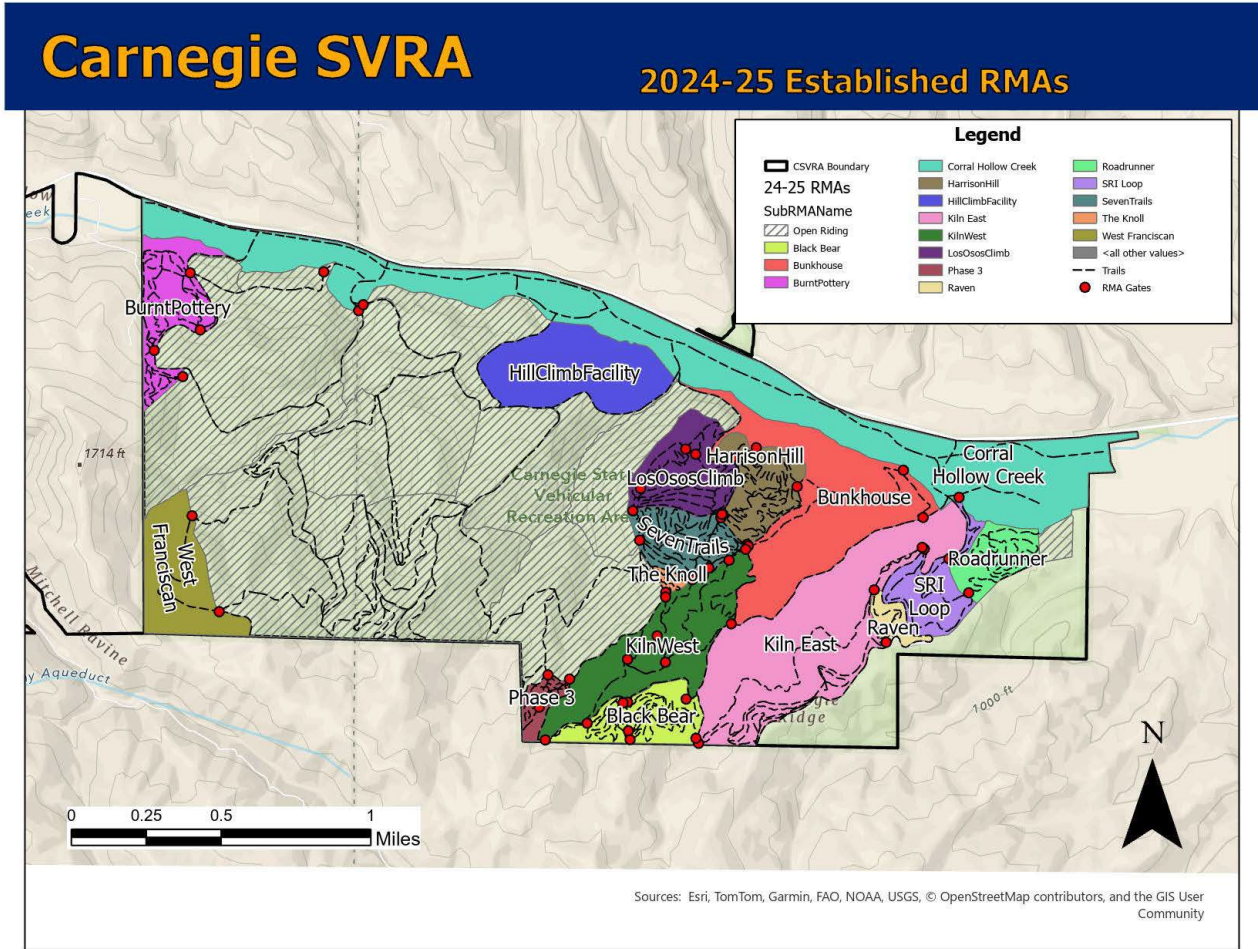


Figure 2-22: Map of Rehabilitated RMAs as of June 2025.

The most innovative approach to the trails program has been a redesign of the methods used to protect the trails and rehabilitated areas. In the past, drift fencing was the primary tool to keep riders on designated trails. This method was re-evaluated and updated so that each rehabilitated RMA is now surrounded by perimeter fencing with access gates at the entry points. If voluntary trails are created, the access gates are closed for a predetermined amount of time to allow staff to make repairs and to reinforce the “trails only” message. The progress of this methodology is discussed in Section 3.2.



Figure 2-23: Example of signage used for trail closures due to off-trail riding.

RMA Rehabilitation Education and Enforcement

The importance of staying on-trail is communicated to the public through educational brochures and interpretive panels. The Trail Patrol and the CAT also interact with the public to enforce RMA rehabilitation rules and to reiterate the need to stay on-trail.

After the rehabilitation work is completed and the area is open to the public, the RMA is inspected by park staff weekly from October through April and every other week from May through September in an effort to track and prevent off-trail riding. Park staff complete a Trail Inspection Report after each assessment of the trails (Appendix G). Off-trail violations result in temporary closure of the entire RMA to allow staff to conduct repairs, if necessary, to ensure that the trails and hillsides are not at risk of mobilizing sediment. Citation(s) are given to the offender(s) when possible so that users understand the consequences of riding off-trail. RMA closure information is displayed on the bulletin boards at the kiosk, as well as posted on the Carnegie SVRA website and social media.

RMA Rehabilitation Progress

As shown in Figure 2-22, approximately 53.1 percent of Carnegie SVRA is managed as a completed (or near complete) RMA. If public OHV access is allowed in an RMA, it is operated as a trails-only facility. When instances of non-compliance are found, the area is closed, repairs are conducted, and often barriers are put up to dissuade visitors from going off-trail.

The number of documented off-trail riding incidents in a given reporting year provides a measure of target audience (i.e., rider) actions. In 2016-2017, 118 off-trail incidents were documented, compared to three documented incidents in 2015-2016. This increase was primarily attributed to more frequent trail inspections and an expansion of available riding trails. In 2017-2018, SVRA staff elected to modify the measure of rider actions by tracking the number of RMA closures resulting from off-trail incidents, rather than the number of incidents themselves. RMA closures allow areas damaged by off-trail riding to recover, and alert riders of the consequences associated with riding off-trail. There were 34 RMA closures documented in 2017-2018, 45 RMA closures in 2018-2019, 47 RMA closures in 2019-2020, 87 RMA closures in 2020-2021, and 89 RMA closures in 2021-2022. Year 10 (2022-2023) was an especially wet year (compared to previous years), resulting in several wet weather closures where access into the RMAs is restricted, as well as an extended park-wide closure due to damage from severe weather, reducing the number of riding days. In Year 10, 31 RMA closures due to off-trail riding were documented. There were 59 RMA closures due to off-trail riding in Year 11 (2023-2024). In Year 12, there were 57 RMA closures due to off-trail riding. Black Bear East and West RMAs were combined into one during Year 12 because these RMAs were only originally split to make rehabilitation simpler. If this RMA had been combined in Year 11, the number of observed OTRs likely would have been lower than 59. Additionally, in this reporting period, the tracking method for OTR incidences was improved by inputting the report results into an excel spreadsheet. The spreadsheet easily conveys to resource managers which RMAs are experiencing recurring OTRs, highlighting that there is a management issue that may need addressing, such as a trail system that may need reconfiguring.

2.8 Summary of Current Projects

2.8.1 Road Reconstruction Project

One of the recommendations from the CHWA was to redesign the roads within the park to reduce their erosion potential. The CHWA identified past, present, and future sources of erosion from the road and trail reaches, stream crossings, and associated gullies within the park. The researchers evaluated the relative quantities of sediment lost, the probability of future erosion, the likelihood of sediment delivery to the creek, and the feasibility and chance of successful treatment with a “geomorphic” approach developed by the National Park Service and California State Parks. Once the issues were identified, rehabilitation measures were developed for each inventoried feature. These rehabilitation measures were designed to provide economical and feasible solutions to mitigate current erosion and sediment mobilization issues while preventing potential future issues.

The road and trail reconstruction measures are intended to be cost effective, reduce maintenance, increase seasonal access for staff and, most importantly, reduce the downslope impacts of improper road and trail drainage (e.g., gullies, landslides, and sediment delivery). Many of the project objectives are aimed at reducing the overall soil disturbance and hydrological connections that currently exist. Breaking these connections will rely on a number of methods including out sloping, rolling dips, reducing trail width, and reroutes. The improvements will be made to 8.1 miles of roads along with several stream crossings.

The CEQA Notice of Determination for this project was filed in 2011 and it was eventually funded as a capital outlay improvement led by State Parks Northern Service Center. This legacy project began during this reporting period in June of 2025. One construction site inspection for this project was conducted by State Parks staff during this reporting period.

2.8.2 Valley Floor Fence Project

After the extensive damage from the 2023 storms, the delineation fencing to restrict OHVs from recreating in Corral Hollow Creek required thousands of feet of replacement or repair work. Altamont Sector staff decided to change the style of fencing used to block off the creek from split-rail fencing to peeler fencing, which will still prevent OHVs from recreating in the creek corridor while also allowing for variable flow for the creek along the valley floor, since the valley floor falls within the flood plain of Corral Hollow Creek. This effort began during the Year 10 reporting period and will continue until the creek delineation fencing throughout the approximately 4-mile length of the valley floor has been replaced. During this reporting period, the fencing on the west end of Carnegie SVRA was completed, totaling approximately 0.66 miles of fence (Figure 2-24).



Figure 2-24: Completed creek delineation fencing at Corral Hollow Creek.

2.8.3 Reopening of West Franciscan RMA

Following the 2015 Tesla fire, the area known as West Franciscan was fenced off to prevent damage to the soils left devoid of vegetation after the fire. In November of 2024, following a several-month-long effort to fence along the corridor of Franciscan Loop trail, West Franciscan RMA was reopened to the public. This project was a collaboration between the Altamont Sector Trail Maintenance staff and the Greater Valley Conservation Corps (GVCC), a unique conservation corps group operated by the San Joaquin County Office of Education that provides education, training and employment to 18- to 26-year-olds in San Joaquin County. Sector staff were able to

use this opportunity to teach GVCC staff how to plan and build different styles of fences, along with natural and cultural resource training that included project-specific BMPs to protect park resources.



Figure 2-25: Altamont Sector staff and Greater Valley Conservation Corps members celebrating the reopening of the West Franciscan RMA.

2.8.4 Harrison RMA Causeways

In Year 12, Altamont Sector staff began working on a project to improve the tread path within Harrison RMA. After rain events and during wet weather, Jammin Trail in Harrison RMA would experience ponding along the trail, resulting in trail widening due to OHVs avoiding the puddles that would collect along the trail. To counter this, Natural Resource staff proposed installing drain lenses along the drainage area of Jammin Trail to allow for drainage to flow without impacting the trail. This project will be completed and reopened to the public in Year 13.



Figure 2-26: Drainage causeway installed in Harrison RMA.

2.8.5 Tesla Property Emergency Repair

During Year 11, flow in Corral Hollow Creek began to undermine the historic road that leads to the Tesla mine property in the Altamont Sector. Emergency repairs were required to prevent the creek from washing away access to this property and a significant portion of the footprint of the historic Alameda-San Joaquin railroad. In coordination with regulatory agencies, Altamont Sector staff worked to stabilize the road to prevent loss of a historic feature. Revegetation efforts were applied to the area to encourage the growth of native forbs. Altamont Sector staff are planning invasive vegetation removal activities at the Tesla property for Year 13 to limit the spread of invasives in the Corral Hollow watershed.



Figure 2-27: Drone photo of the emergency repair at the Tesla property.

2.8.6 Geotechnical Investigation at SRI Crossing

During Year 12, a geotechnical investigation was conducted at SRI crossing within Carnegie SVRA. SRI crossing is one of the five low-water crossings used to provide access from the north side of Corral Hollow Creek to the facilities and trail system that lie on the south side of the creek. SRI crossing is one of two hardened creek crossings within Carnegie SVRA and was likely installed prior to 1990 to ensure access to the Stanford Research Institute Explosive Testing Facility, which has since ceased operations and sold the property to a private landowner. The culverts encased in cement at this creek crossing are evaluated each year as a component of the MS4 permit requirements; due to changing conditions in the dynamic system of Corral Hollow Creek, this hardened crossing has been identified as a potential “choke point” in the creek, where natural movement is being controlled and unnatural deposition may be occurring. This geotechnical investigation may provide insight into potential designs for a creek crossing that can sustain the significant creek flow that results from heavy rainfall.



Figure 2-28: Pre-construction training meeting for the SRI geotechnical investigation project.

3 Progress of the Altamont Sector Stormwater Program SVRA Stormwater Program

3.1 Short-Term Progress

The Altamont Sector Stormwater Program completed all 2023-2024 compliance requirements associated with the Phase II Permit as described in the Effectiveness Assessment (Appendix A), as well as the 13th year of the SWMP implementation. The SWMP implementation, which is often performed in conjunction with Phase II Permit compliance activities, includes the following:

- Education and Outreach Program;
- Public Involvement and Participation Program;
- Illicit Discharge Detection and Elimination Program;
- Construction Site Runoff Control Program;
- Pollution Prevention/Good Housekeeping Program;
- Post-Construction Stormwater Management Program;
- OHV Trails and Facilities Management;
- Program Effectiveness Assessment and Improvement;
- Total Maximum Daily Loads Compliance Requirements; and
- Online Annual Reporting.

Short-term progress was demonstrated by the stormwater program's implementation through the successful completion of Phase II Permit compliance and SWMP implementation activities. In addition to Phase II Permit compliance, the following SWMP activities have been completed or initiated, and are continuing to have a positive impact on short-term progress.

- Wet Weather OHV Road and Trail Closures – use of minimum closure times, cumulative precipitation measurements over specified durations, and more stringent re-opening criteria to determine the necessity of trail closures. This practice was originally implemented for Carnegie SVRA but is also employed throughout the Sector, limiting vehicle access on unpaved road surfaces after rain events.
- Limited Vehicle Access in Riparian Areas (Corral Hollow Creek) – OHV and vehicle access is limited to five crossings (i.e., one bridge and four hardened low-water crossings) to allow for the re-establishment of riparian vegetation and habitat. Sector staff enhance the opportunity for vegetation re-establishment throughout the creek corridor by supplementing plantings and watering of native riparian plants within Carnegie SVRA.

3.1.1 Stormwater Monitoring Data

The results of stormwater monitoring for turbidity in nephelometric turbidity units (NTU) and total suspended solids (TSS) are included below in Table 3-1 and Table 3-2, respectively. This data can be used to evaluate the effectiveness of the BMPs chosen as part of the strategy.

There were seven storm events during this reporting period for which stormwater monitoring was attempted. It is worth noting that that sampling only occurs when sufficient flow is observed and when it is safe to do so. Two storm events resulted in significant enough flow to collect

stormwater samples. One set of stormwater samples were found to be frozen in the holding refrigerator overnight and were not viable for lab analysis. See Figure 3-1 for sampling locations and Appendix H for stormwater sampling forms.

Table 3-1: Turbidity (NTU) Data for BMP Monitoring Effectiveness

Date	CHC In	Ty 1	Ty 2	Car 1	Car 2	Kiln1	Kiln2	CHC out
2/13/25	-	13500	1800	7300	1800	2000	2900	-

Table 3-2: Total Suspended Sediments (TSS) Data for BMP Monitoring Effectiveness

Date	CHC In	Ty 1	Ty 2	Car 1	Car 2	Kiln1	Kiln2	CHC out
2/13/25	-	13000	1470	8130	1580	2490	2830	-

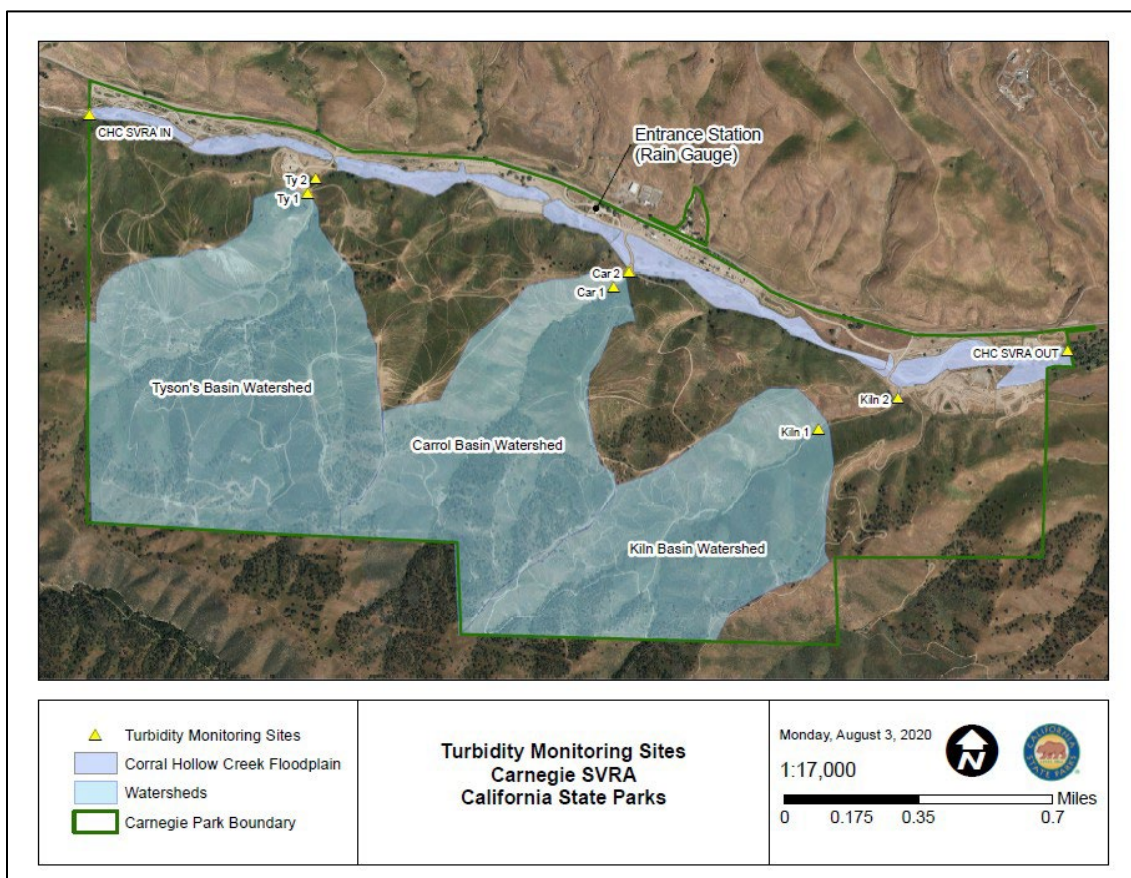


Figure 3-1: Turbidity monitoring sites

3.1.2 Wet Weather Trail Closures

A quantitative, cumulative precipitation measurement is used to trigger a park closure at Carnegie SVRA. Using hydrological models and historic conditions, the following thresholds were determined to be representative of when soil becomes saturated enough for sheet flow to occur.

- More than 0.30 inches within 12 hours
- More than 0.50 inches within 24 hours
- More than 0.65 inches within 48 hours

The SVRA’s trails are closed if any of the above thresholds are realized, measured using the rain gauge at the entrance station. Similarly, trails remain closed as precipitation continues to be above the threshold.

The trails, or portions of the trails, are re-opened only when **all** of the following conditions are met, which is determined at the monitoring locations:

- Site conditions are safe;
- No environmental or resource concerns exist;
- Stormwater BMPs are functional and in good condition (e.g., rolling dips, basins);
- The trails have been closed for at least 12 hours; and
- The trail slopes have dried sufficiently, and soils are stable enough to support OHV use.

Wet weather closures occurred 5 times during this reporting cycle, resulting in full or partial day closures (Table 3-3). It is worth noting that State Park Peace Officers may restrict access to the trails system in the hills if conditions compromise staff or public safety; those closures are not discussed in this section. The precipitation total for the 2024-2025 reporting cycle was 8.25 inches.

Table 3-3: Wet Weather Closures

Area	Closed	Opened
All Hills	Saturday November 23, 2024	Sunday November 24, 2025
All Hills	Thursday December 12, 2024	Monday, December 16, 2024
All Hills	Tuesday February 4, 2025	Saturday February 8, 2025
All Hills	Thursday February 13, 2025	Saturday February 15, 2025
All Hills	Thursday March 13, 2025	Saturday March 15, 2025

3.2 Long-Term Progress

Long-term progress of the program demonstrates a determinate shift in park staff and visitor behavior and a measurable reduction in sediment discharges from the SVRA. In order to monitor the progress of the program and effectiveness of the BMPs, the SWMP includes a series of measurable goals established for each Minimum Control Measure. Measurable goals are intended to gauge the effectiveness of the SWMP and specifically selected for each BMP. They consider the site conditions, climate, and land use activities.

As a Phase II permittee, Altamont Sector anticipates that the completion of recurring compliance activities will aid in achieving long-term water quality improvement goals. In addition, the following long-term program activities have been initiated as part of the SWMP implementation.

- Implementing the Carnegie SVRA RMA Program (formerly the Trails Program) – Delineates the park into RMAs, and includes erosion and sediment control installations, vegetation rehabilitation, rider education, reduction of trail density, increase of vegetation, and enforcement actions.
- Trail Redesign and Sustainability – Aims to redesign trails with the goal of reducing overall soil disturbance and breaking hydrologic connections.

3.2.1 Annual Trail Condition Evaluations

Carnegie SVRA's OHV Trails Program aims to reduce sediment discharges resulting from park activities by creating sustainable, well-designed trail systems, and rehabilitating erosive areas of the park. RMAs – park sub-areas generally delineated by sub watershed boundaries – have been designated throughout the park to help manage the implementation of the Trails Program. The program includes the annual evaluation and classification of trail conditions throughout the park. All trails are assigned a rating as follows:

- **Green** - Indicates the trail is in good condition and the water features (used to reduce erosion) are functioning properly.
- **Yellow** - Assigned when the water features or trail tread are beginning to show signs of deterioration. (**Note: This category was expanded in Year 4 to also include minor deficiencies that warrant attention.**)
- **Red** - Indicates the trail has deteriorated and its water features are no longer functioning as designed.
- **Not Rated** - Trails that were not rated in the past reporting year.

Trail condition is an important metric for evaluating sediment management because poor trail condition is a leading source of erosion in the SVRA. Trail evaluations provide a feedback loop for determining the effectiveness of sediment and erosion control measures employed, as well as helping to guide future maintenance activities. Trail evaluations are typically conducted in late Spring or early Fall, depending on staffing availability and soil conditions. The overall goal is to observe an increase in Green trail ratings and a reduction in the percent of Yellow and Red ratings. The Yellow rating scale was expanded in Year 4 to also include minor deficiencies (i.e., marginally deficient areas were classified as Green in Year 3). The park-wide trail ratings for Years 3 through 12 are presented as percentages in the table below; note that trail evaluations were not

conducted in Year 11. In Year 12, OHMVR Division staff assisted Carnegie SVRA staff with trail evaluations and provided training to new staff members on proper trail rating procedures. Year 12 saw an increase in green and yellow rated trails and a slight decrease in red rated trails compared to Year 10. The results of the trail evaluations for Year 12 can be found in Figure 3-2. Altamont Sector staff will continue to monitor trail conditions within Carnegie SVRA to evaluate for potential sediment losses. The form used to evaluate trails can be found in Appendix I.

Table 3-4: Annual Trail Ratings

Trail Rating (Color)	Year 5 Ratings (2017-18)	Year 6 Ratings (2018-19)	Year 7 Ratings (2019-20)	Year 8 Ratings (2020-21)	Year 9 Ratings (2021-22)	Year 10 Ratings (2022-23)	Year 11 Ratings (2023-24)	Year 12 Ratings (2024-25)
Green	22%	12%	49%	70%	77%	49%	-	64%
Yellow	50%	62%	44%	18%	22%	14%	-	26%
Red	13%	7%	7%	1%	1%	11%	-	10%
Not Rated	15%	19%	0%	10%	0%	26%	100%	0%

While the trail ratings are not solely a representation of soil loss because there are other factors that are measured simultaneously, they provide a useful general overview of trail conditions that can be used to measure progress over time. Trail ratings will continue to be tracked annually with the goal of observing higher percentages of green trail ratings in the future.

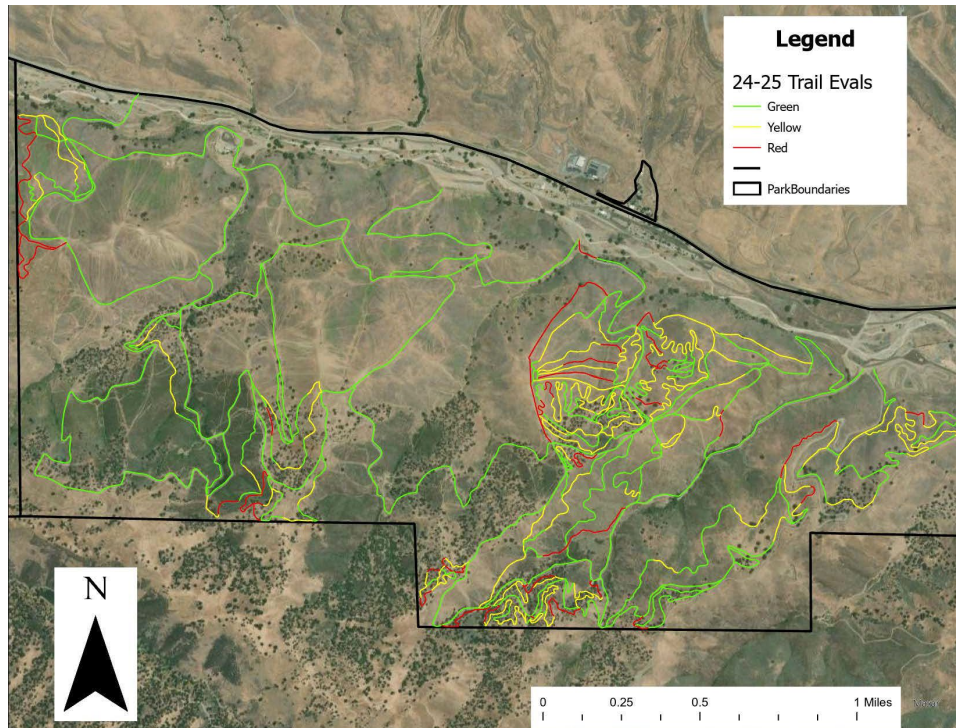


Figure 3-2: Carnegie SVRA Trail Evaluations Results from Year 12

3.2.2 Sediment Basin Maintenance

Sediment basins are cleaned annually to remove accumulated sediment and material. The amount of material deposited in the sediment basins is a function of rainfall intensity and duration. It does not necessarily reflect the effectiveness of upstream erosion and sediment controls (i.e., a single, short-duration, high-intensity storm can deposit the same volume of sediment in a basin as numerous longer, low-intensity storms). This measurement solely indicates how much material the basins captured and prevented from discharging to receiving waters. Rainfall totals and basin material removal volumes are presented in Table 3-5. Rainfall totals are measured from July 1 to June 30 each year. Environmental permits, which are required to perform maintenance activities in the basins, were not issued in time to remove accumulated sediment in Years 4 or 10 (indicated by N/A in Table 3-5). In Year 11, sediment removal occurred under California Governor Executive Order N-10-23.

Table 3-5: Rainfall Totals and Sediment Basin Material Removal Volumes

Measurement	Year 4 (2016 - 2017)	Year 5 (2017- 2018)	Year 6 (2018- 2019)	Year 7 (2019- 2020)	Year 8 (2020- 2021)	Year 9 (2021- 2022)	Year 10 (2022 - 2023)	Year 11 (2023 - 2024)	Year 12(202 4 - 2025)
Rainfall Total (in inches)	22.00	11.00	14.45	7.71	5.46	11.33	20.06	11.85	8.25
Volume of Material Removed from Basins (cubic yards)	N/A	3,311	6,265	2,594	2,126	1,290	N/A	6,560	800

3.2.3 Sediment and Erosion Control BMP Evaluations

Evaluations of sediment and erosion control BMP installation and performance began with the 2016-2017 Effectiveness Assessment. While deficiencies are not necessarily an indicator of improper installation (e.g., damage from heavy storms or off-trail riding are probable), the high percentage of properly installed and functional BMPs demonstrates that SVRA staff are continuing to perform installations correctly. The overall results for the 2023-2024 BMPs installation evaluations are presented in Table 3-6.

Table 3-6: Evaluation Summary of BMP Installations

BMP Installation Evaluation Criteria	Year 5 Ratings (2017-18)	Year 6 Ratings (2018-19)	Year 7 Ratings (2019-20)	Year 8 Ratings (2020-21)	Year 9 Ratings (2021-22)	Year 10 Ratings (2022-23)	Year 11 Ratings (2023-24)	Year 12 Ratings (2024-25)
Properly installed, continuing to function as intended	78%	81%	71%	68%	71%	46%	53%	65%
Minor deficiencies identified	10%	9%	15%	11%	13%	16%	16%	11%
Not installed correctly, or not functioning properly. Replacement required.	10%	6%	9%	8%	14%	13%	24%	24%
Not Rated	2%	4%	4%	14%	2%	25%	7%	0%

After an especially wet year that left many trails damaged and/or inaccessible (i.e., resulting in a higher number of not rated trails in Year 10), there was a significant decrease in BMPs that were not rated in Year 11. Accordingly, there were also slight increases of both properly installed BMPs and BMPs with major deficiencies in Year 11. In Year 12, all 650 inventories BMP features were evaluated. There was an increase in properly installed and functioning BMPs in Year 12 and a slight decrease in BMPs with minor deficiencies identified. Because of the implementation of the legacy roads project in Carnegie SVRA, the BMP inventory in Year 13 will need remapping to account for changes that the project may have installed or altered. BMP evaluations will continue to be performed annually, with the goal of observing high percentages of properly installed BMPs each year.

3.2.4 Trash Assessment

On June 1, 2017, Altamont Sector received a Water Code Section 13383 Order (13383 Order) to select and submit a compliance track to comply with the Trash Amendments.

The 13383 Order required that permittees identify the locations and land uses that generate substantial amounts of trash within their facility, as well as select and submit a compliance track by September 1, 2017. Altamont Sector selected the Track 2 compliance option in a letter to the SWRCB submitted via the Stormwater Multiple Application and Report Tracking System website. Since Track 2 requires a combination of controls that will achieve Full Capture System Equivalency, the submittal also included preliminary jurisdictional maps that identified proposed park-specific Priority Land Uses (PLUs), as well as the MS4 network that conveys the discharges from those land uses. The 13383 Order also specified that by December 1, 2018, permittees that selected the Track 2 compliance option must submit updated jurisdictional map(s) and an Implementation Plan.

The Trash Amendments define typical PLUs as high density residential, industrial, commercial, mixed urban, or public transportation station areas. The 13383 Order states that “[non-traditional Phase II MS4 permittees] may not have typical Priority Land Uses; therefore, the application of the Priority Land Use definition is subject to interpretation for such permittees.” As a non-traditional permittee, Altamont Sector does not have typical PLUs, and therefore identified the following park-specific PLUs:

- Campgrounds
- Day Use Areas
- Parking Areas

The recommended On-land Visual Trash Assessment (OVTA) approach to conduct the Baseline Trash Assessments (Baseline Assessments) involved are based surveys that were conducted in park-specific PLUs. OVTA scores from the Baseline Assessments are presented in Table 3-7.

Table 3-7: Baseline Trash Assessment

Area	Trash Rating	OVTA Score	Area (acres)
Day Use Area	Low	A	8.13
Hillclimb Facility Parking	Low	A	40.59
Park Store Parking	Low	A	44.42
Campground	Low	A	55.39
Quad Track Parking	Low	A	4.40
MX Track Parking	Low	A	36.06
110cc Track Parking	Low	A	16.11
Total	-	-	205.11

The 13383 Order states that Phase II MS4 non-traditional permittees who have selected the Track 2 compliance option must “install, operate, and maintain any combination of Full Capture Systems, Multi-Benefit Projects, other Treatment Controls, and/or institutional controls

(equivalent Full Capture Systems Best Management Practices) within either: (1) their own jurisdiction, or (2) their own jurisdiction and the jurisdiction of contiguous MS4 permittees.” Correspondingly, “permittees selecting the Track 2 compliance option and not installing Full Capture Systems must demonstrate that the proposed implementation plan will achieve Full Capture System Equivalency.”

Altamont Sector has an estimated Annual Baseline Trash Load of zero gallons per the Baseline Trash Load Calculations (see Table 3-8). Consequently, no additional trash reduction measures will be necessary for the Day Use Area, Hillclimb Facility Parking, Park Store Parking, Campground, Quad Track Parking, MX Track Parking, or 110cc Track Parking, since the Baseline Assessments yielded “Low” OVTA scores for these areas.

Table 3-8: Baseline Trash Load Calculations

Category	Low	Moderate	High	Very High	Total
Average Trash Generation Rate (gallons/acre/year)	N/A	7.50	30	100	-
PLU Area (acres)	205.11	0	0	0	205.11
Estimated Baseline Trash Load (gallons/year)	N/A	0	0	0	0

Altamont Sector is in compliance with the 13383 Order and will continue to apply current trash control measures to ensure ongoing compliance. The forms used to document trash assessment data are located in Appendix J.

3.2.5 Rehabilitating Trails and Re-Establishing Vegetation

-Reducing trail density and re-establishing vegetation are goals of the Altamont Sector SWMP intended to reduce potential sediment discharges. Vegetation surveys were conducted for Altamont Sector in 2022 using the VegCAMP method to track the progress of vegetation re-establishment within Carnegie SVRA of the Altamont Sector. VegCAMP surveys will be updated approximately every 5 years with a goal of reducing the total acreage of barren area within Carnegie SVRA. (Figure 3-3; Table 3-9).

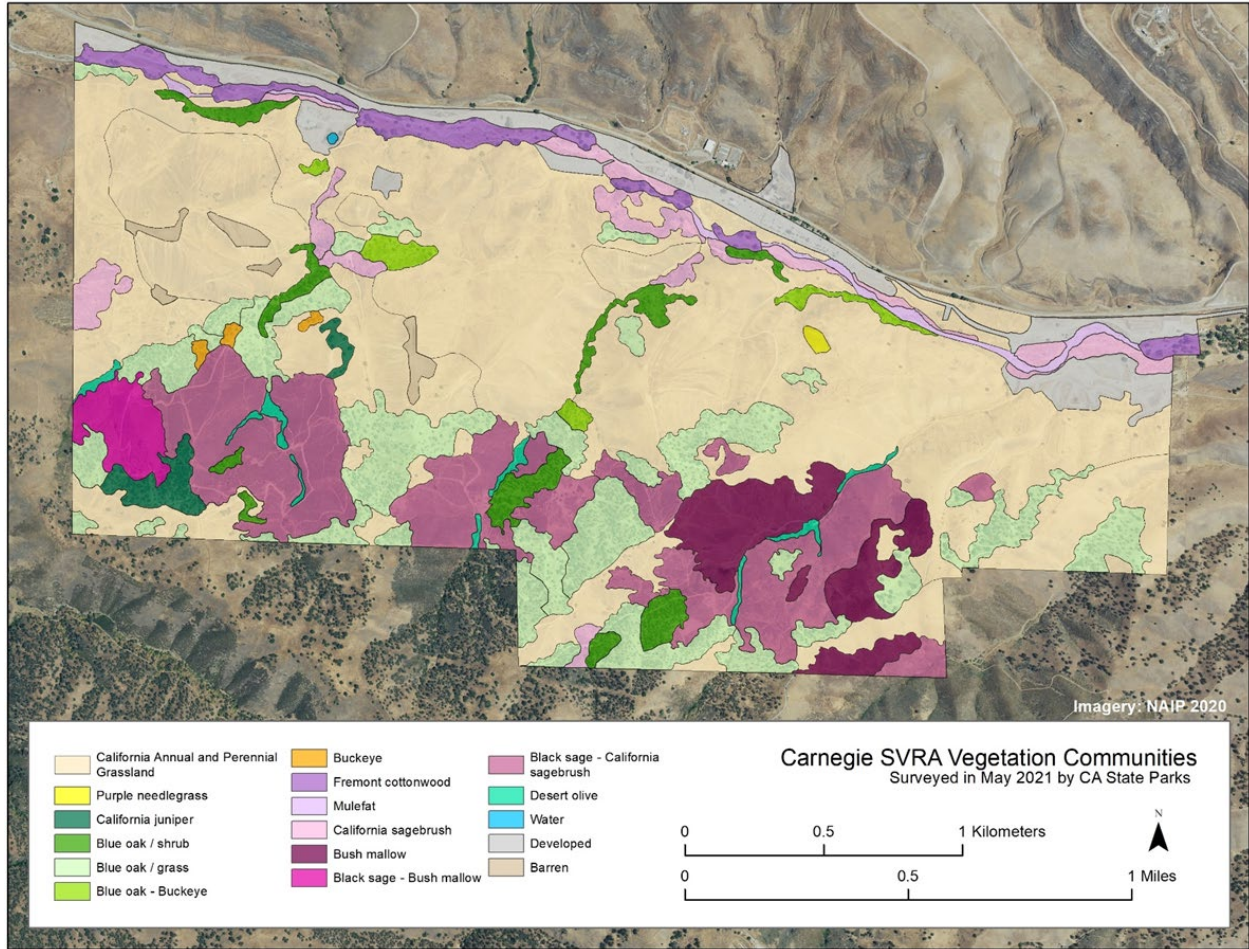


Figure 3-3: Vegetation Community Map at Carnegie SVRA

Table 3-9: Carnegie SVRA Mapped Vegetation Types and Acreage

	NVCS Name	Common name map label	Total Acres
Tree Overstory (Woodland / Forest) Vegetation	<i>Juniperus californica</i> woodland alliance	California juniper	13.9
	<i>Aesculus californica</i> forest and woodland alliance	Buckeye	2.9
	<i>Quercus douglasii</i> / Mixed herbaceous association	Blue oak / grass	197
	<i>Quercus douglasii</i> - <i>Aesculus californica</i> / grass association	Blue oak - Buckeye	13.3
	<i>Quercus douglasii</i> / <i>Ericameria linearifolia</i> association	Blue oak / shrub	37.5
	<i>Populus fremontii</i> - <i>Fraxinus velutina</i> - <i>Salix gooddingii</i> Forest and woodland alliance	Fremont cottonwood	35.4
Shrubland Vegetation	<i>Rhus trilobata</i> - <i>Crataegus rivularis</i> - <i>Forestiera pubescens</i> shrubland alliance	Desert olive	9.6
	<i>Baccharis salicifolia</i> shrubland alliance	Mulefat	12.3
	<i>Malacothamnus fasciculatus</i> - <i>Malacothamnus</i> spp. shrubland alliance	Bush mallow	60.9
	<i>Salvia mellifera</i> – <i>Artemisia californica</i> alliance	Black sage - California sagebrush	199.54
	<i>Salvia mellifera</i> - <i>Malacothamnus fasciculatus</i> association	Black sage - Bush mallow	21.1
	<i>Artemisia californica</i> association	California sagebrush	50.2
Herbaceous Vegetation	California annual and perennial grassland macrogroup	California annual and perennial grassland	770.7
	<i>Nassella</i> spp. - <i>Melica</i> spp. alliance	Purple needlegrass	1.5
Non-Vegetated	Barren	Barren	11.1
	Developed	Developed	94.9
	Water	Water	0.3
SUM			1,533

In 2021, Carnegie SVRA reassessed its method for watering the newly planted trees in the creek. Sector staff ran irrigation lines to the new plantings and maintains these lines to water the trees

for an estimated three to five years until the trees are well enough established to access groundwater on their own. Before drip irrigation, survival success was low because young plantings were not well enough established to maintain nutrients on their own. Since the drip irrigation was installed and used, less than one percent of planted saplings is not successful.

Approximately 300 trees were planted in Year 11, but Sector staff observed low survival rates and frequent damage to irrigation lines as a result of a boom in the rodent population. Monitoring and irrigation of the surviving trees continued in Year 12. Approximately 250 riparian trees were planted in the floodplain of Corral Hollow Creek during this reporting period, including California sycamore (*Plantanus racemosa*), Fremont cottonwood (*Populus fremontii*), red willow (*Salix laevigata*), and mulefat (*Baccharis salicifolia*). Staff continued to encounter problems in this reporting period with the irrigation line, observing that the warm weather would impact watering operations by increasing the heat of leftover water in the irrigation lines to the point where the water was near boiling hot when it got to the trees to be irrigated. Additionally, staff encountered problems with the irrigation lines being chewed on by wildlife who were looking for sources of water in the dry, hot summer months. Tree survival rates and irrigation line efficiency will continue to be monitored in Year 13.

3.2.6 Photo Monitoring Program

The photo monitoring program is aimed at collecting photos from fixed locations over time to detect both natural and manmade changes. Photos allow for objective evaluations of the BMPs and methods chosen to manage the park's natural resources. These photo points are helpful for the monitoring of the RMA model since limiting off-trail riding is the primary goal of the Trails Program strategy. Landscape photos can reveal the success or failure of the tactics chosen as off-trail activity is easily visible. Photo points were set up throughout the park starting in 2010. To date, there are over 100 photo points, with more points added as needed. Data is collected at these points one to two times per year and is used to illustrate the progress made on the trail system with the various restrictions over the years. In Year 11, the process for collecting photo points was re-evaluated to ensure repeatability and to simplify the data collection process. Sector staff used Year 12 to develop the updated protocol for the photo points program and plan to introduce the new photo point system in Year 13.

3.3 Program Modifications

Beginning in Year 5, the Phase II Permit required that permittees identify modifications to control measures or significant activities based on information obtained through the EA process. After reviewing the available EA data and discussing program functionality with park staff, the following modifications were identified, implemented, and further revised as part of the Year 6 through Year 12 EA process.

- Earlier Initiation of the EA Process: In previous years, the EA process had been initiated after the conclusion of the respective reporting year. Starting in Year 6, staff began the EA process during the reporting year to ensure that all of the required activities were completed and goals from the previous year were met before the deadline. In the previous year's EA were met. In Year 13, the EA review process will once again begin in May.
- Perform Inspections, Assessments, and Observations earlier in the Quarter: In Year 7, DPR received approval from the State Water Board for temporary regulatory relief for specific provisions in the Phase II MS4 Permit. COVID-19 highlighted how unforeseen circumstances can impact a permittee's ability to meet permit requirements. As such, the Altamont Sector will aim to perform quarterly inspections, assessments, and observations earlier in each quarter to help mitigate impacts, should a similar event occur in the future.
- Enhance Target Audience Awareness: Opportunities to enhance target audience awareness were identified in Year 9, such as developing new informational panels and offering new educational material in multiple languages. As such, the development of additional public education and outreach material has been prioritized in recent years. In Year 11, the Altamont Sector offered one digital brochure, two paper brochures, and one informational panel in both English and Spanish. In response to an increase in recent wet weather closures, an ArcGIS Story Map was also made available in Year 11 to educate the public on the extensive damage caused throughout the park. In Year 12, a new watershed model was created to help educate visitors regarding the possible downstream impacts of erosion, as well as the importance of staying on trail throughout the SVRA. Additional educational materials and programs will be explored in Year 13.
- Digitize Data Collection Efforts: In Year 11, State Parks began to collect inspection forms in digital format. Additional inspection forms were added in Year 12. This digital reporting system allows inspectors to efficiently collect and upload field data, including photos. An added benefit from digitizing record collection is that this method allows for improved analysis of the data. To date, Altamont Sector collects the following inspection data on a digital format:
 - Annual Facility Assessments Forms
 - Quarterly Hotspot SWPPP Inspection Forms
 - Quarterly O&M Activity and BMP Assessment Forms
 - IDDE Reporting Form
 - Stormwater Sampling Report

- Use of Smart Phone or Tablet Applications: The effort to digitize record collecting in recent years has prompted State Parks staff to use mobile smartphone or tablet applications to collect inspection data. For example, Survey 123 has been used to collect illicit discharge information, and Field Maps has recently been used to collect storm drain inspection data. As we continue to improve ease of access and provide additional staff training, we may see a short-term increase in the number of inspection forms filled out by park staff. Despite the increase in completed forms, this may not necessarily signify that more incidents, such as illicit discharges, have taken place.

The Altamont Sector Storm Water Program has successfully performed all planned activities (Outcome Level 1), identified data gaps, and closed several data gaps across various Outcome Levels. The program has also improved Target Audience Awareness (Outcome Level 2), measuring staff awareness of stormwater issues at a “High” level (over a 90 percent average assessment score) and visitors at an “Acceptable” level (75-90 percent average assessment score) in Year 11. Data pertaining to Target Audience Actions (Outcome Level 3) and Pollutant Source Contributions (Outcome Level 4) has not yielded any significant trends to date. However, continuing the annual collection of EA data through the next permit term is expected to help identify programmatic improvements.

Appendix A

2024-2025 Effectiveness Assessment

[Available upon request via email at ohvinfo@parks.ca.gov]

Appendix B

Public Education and Outreach Material

[Available upon request via email at ohvinfo@parks.ca.gov]

Appendix C

Pollutant Source Maps

[Available upon request via email at ohvinfo@parks.ca.gov]

Appendix D

IDDE Inspection Program

[Available upon request via email at ohvinfo@parks.ca.gov]

Appendix E

Construction Site Management Program Checklist

[Available upon request via email at ohvinfo@parks.ca.gov]

Appendix F

MS4 Hotspot and Facility Inspection Forms

[Available upon request via email at ohvinfo@parks.ca.gov]

Appendix G

Off-Trail Riding Inspection Form

[Available upon request via email at ohvinfo@parks.ca.gov]

Appendix H

Stormwater Quality Sampling Form

[Available upon request via email at ohvinfo@parks.ca.gov]

Appendix I

Trail Evaluation Form

[Available upon request via email at ohvinfo@parks.ca.gov]

Appendix J

On-Land Visual Trash Assessment Form

[Available upon request via email at ohvinfo@parks.ca.gov]